



stockist:

KREIDEZEIT Naturfarben GmbH

valid 09/2019 Art. 848



Kassemuehle 3
D - 31195 Lamspringe
Phone +49 (0) 50 60 - 60 80 650
Fax +49 (0) 50 60 - 60 80 680
info@kreidezeit.de
www.kreidezeit.de

Surfaces



Content

Casein

Casein Paint, Mix-Your-Own	8
Primers	10
Casein Primer, Vega Primer, Wall Filler	
Wall Paints	12
Casein Marble Paint / Vega Wall Paint, Brush- and Roll-on Plaster	
Clay Paint -smooth- & -textured-	15
Full-tone Binder	16
Distemper	18

Silicate Paints

Silicate Paint, GekkoSOL Paint	20
GekkoSOL FINE-Grain	20
GekkoSOL Thinner	20
Wall Glazes	22

Lime

Lime Paints	26
Lime Plasters	28
Lime Wall Finishes	30
Mould, our biocide-free solution	33
Decorative Polished Plasters	34
Stucco Fine Render, Stuccolustro	36
Marmorino, Tadelakt	39
Decorative Aggegates	40
Pigments	44
Colour Fan Wall Paints & Plasters	47

Wood

Oils & Waxes solvent-free	
Hard Oil, Hard Wax Oil	50
Multi Purpose Wax, Safflower Multi Purpose Wax, Linseed Oil Varnish	53
Oils & Waxes Floors + Worktops	
Floor Hard Oil, Floor Hard Wax, Wood Hard Oil, Worktop Oil	55
Tempera Paint, GekkoSOL Lazure	56
Shabby Chic Set	59
Garden Furniture Oil	60
Wood Lazures	62
Stand Oil Paint	64
Rust Protection Paint	67

Cleaning & Care

Corfu Soap, Marseille Soap	68
Polishing Soap, Olive Care Soap	70
Carnauba Wax Emulsion, Window Care Set, Care Oil	72
Picture Sources	75





Since 1987 we have been manufacturing ecologically consistent, fully declared paints and materials for the surface design of walls and facades such as paints, plasters and wood coatings from natural and renewable raw materials.

Our products are based on traditional recipes that have been tried and tested for centuries and are sensible in terms of building physics. The results are products that maintain and positively influence the natural properties of a substrate such as room climate control.

All our products are free of preservatives, synthetic solvents, plastic binders and plasticizers.

In addition, we do not use water in most of our paints and plasters. This not only saves us transport costs, but also significantly reduces our ecological footprint, saves plastic packaging and does not require any preservatives.

We think things through consistently.

Unconventional & Consistent





Casein paints are coatings for walls and ceilings which contain pure natural milk protein (Casein) as a binding agent. Even since the times of ancient Egypt paints made of milk and pigments were produced and used. Similar paints have been mentioned in old Hebrew documents. Mural paintings in the Sistine Chapel (Secco technique) have been made durable using similar traditional paint.

Later on curd cheese has been used instead of milk, it contains three times more casein (about 12 %). Due to the usage of milk and curd cheese these colours always had to be applied when they were still fresh. They could only be kept a few hours to a few days. Modern casein paints are produced in powder form and contain dried casein. This extends the shelf life to a couple of years. Preservatives became unnecessary, thus reducing transport weight, packaging waste and keeping transportation costs to a minimum.

A recent trend is the usage of casein, based on vegetable protein binder. Vegetable casein derives from protein producing plants like peas, lupines, beans or other leguminous plants. Milk casein is obtained by treating fresh milk with acid or rennet flocculating the protein, so that it can be filtered, dried and pulverised. The protein actually keeps its food quality. Casein alone cannot be used as a binder, it lacks sufficient adhesive force. It will not change into an adhesive before alkalis have been added, which break the protein down. Suitable agents are potash, soda, bicarbonate (baking powder), salts of hartshorn, borax or lime hydrate.

In contrast to most other colour binders the appearance of pigments and filling materials are not altered by casein; hence pigments will shine in their unique typical brilliance. Ecologically, Casein paint is absolutely harmless throughout the whole product cycle (production, use and disposal). Paint residue can even be composted.

Milk Casein Based Products

- Casein Primer
- Casein Marble Paint
- Brush- and Roll-on Plaster
- Wall Glaze Binder
- Casein Paint, Mix-Your-Own
- Marble Fibre Render
- Tempera Paint

Plant Casein Based Products

- Vega Wall Paint
- Clay Paint white -smooth-
- Clay Paint white -textured-
- Vega Primer
- Full-tone Binder

Casein Paint & Plaster



It all started with this paint...

The original idea was a demonstration to illustrate how historical emission free colour mixes could be an alternative to environmentally damaging conventional paints (Organic market in Hildesheim, around 1985). It rapidly became a real sales hit, which led to the founding of our company Kreidezeit. Over many years the simple and yet technically astonishing high quality wall paint gained many fans and still finds new ones.

Make your own casein based paint. Mix the binder from curd cheese and soda and finally put chalk powder in. Experience the enormous opacity and applicability of this simple paint. For the German WDR, a German TV Broadcasting station, the didactic content was worth broadcasting three individual programmes about this principle in the popular educational TV programme "Sendung mit der Maus".

Suitable for almost all interior building materials: all kinds of plaster, paper based wallpapers, stone, dry walls.

Product Characteristics

- powder, mix with water
- highly diffusible
- natural chalk-white colour
- can be painted over several times
- can be tinted with all earth and mineral pigments
- without preservatives



Casein Paint mix-your-own

Primers



Casein Primer

Casein Primer has a firming effect and lowers absorbency. It is an important and low-cost component of every paint and plaster job, suitable for all absorbent plasters, plaster boards and mineral based old coatings.

Since it contains the same type of binder, it is the ideal primer for casein based paint and plaster. The subsequent layers of lime plaster and paint will connect safely and firmly through chemical reaction.

Vega Primer

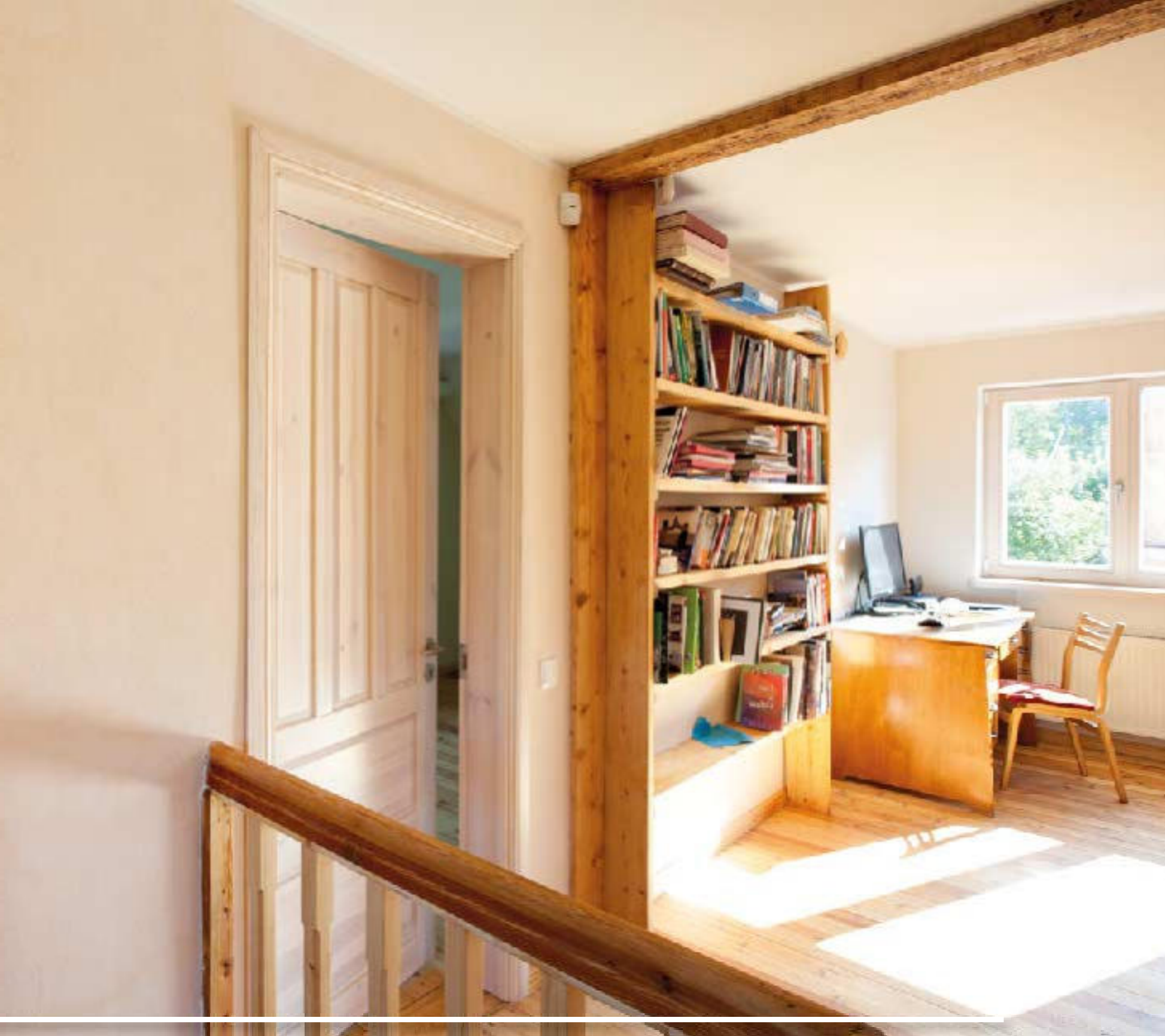
Colourless transparent and well penetrating primer for subsequent coats and plaster applications with KREIDEZEIT casein paints, lime paints and plasters. Does not limit the steam absorption of plasters (sD value < 0.01 m), so Vega Primer is ideally suited especially for clay and lime plasters. Vegan and low-odour alternative to our casein primer, contains plant protein.

Product Characteristics

- powder, mix with water
- transparent

Wall Filler

KREIDEZEIT Wall Filler is a lime-bound filling and smoothing putty for interior use. For thin-layer repairs and full-surface smoothing of rough or uneven surfaces. Thin layers can be sanded after 3 hours. For application thicknesses from 0-4 mm. It does not harden when stirred and can be further processed over many months.



These excellently covering and cost-effective paints are suitable for almost all interior wall building materials. Italian marble powder gives these colours their unobtrusively, harmonic bright white colour, without any titanium white. The difference between Vega Wall Paint and Casein Marble Paint is only the binder; the technical characteristics are the same.

Product Characteristics

- Powder, mix with water
- easy to use with brush or roller
- highly diffusible
- can be tinted with all earth and mineral pigments
- particularly suitable for people with allergies

Casein Marble Paint

- bound by milk protein
- our best-selling wall and ceiling paint, proven and popular since 1995

Vega Wallpaint

- bound by vegetable protein
- for customers, who prefer vegetable based products

Brush- and Roll-on Plaster

- bound by milk protein
- filling, fine-grained coating, Compensates slight structural differences, grain max. 0.5 mm

Wall Paints

Brush- and Roll-on Plaster



A natural white clay and light marble flours produce the homely matt finish of real clay. Tinting the Clay Paint with Kreidezeit pigments opens up a wide range of creative possibilities.

The Clay Paint -smooth- achieves smooth and matt surfaces, the -textured- type contains additional marble grain (0.5 mm maximum), hence resulting in a light plaster texture.

The outstanding characteristic of these paints is the cloth-matt finish, which gives wall surfaces a special and comforting look.

Product Characteristics

- Powder for mixing with water
- Colour: white
- low odour
- anti-static
- highly diffusible
- good opacity; can be painted over several times
- free from preservatives and synthetic resin binders
- suitable for all structurally-sound, indoor renders, ingrain wallpaper, pure wallpaper, paper fleece, plasterboard, gypsum fibreboards and concrete



Clay Paint -smooth-

Clay Paint -textured-

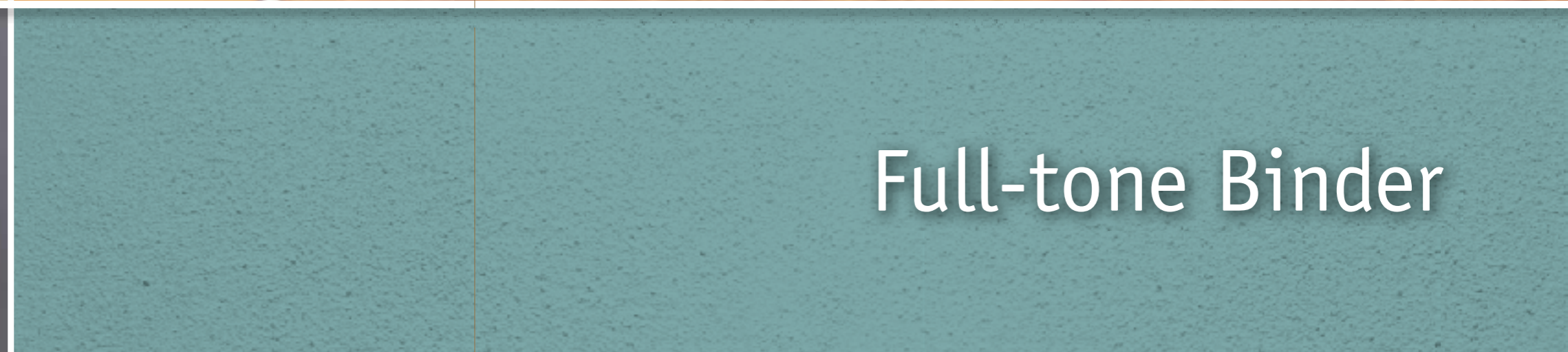
Clay Paint -smooth- & -textured-

Full-tone Binder

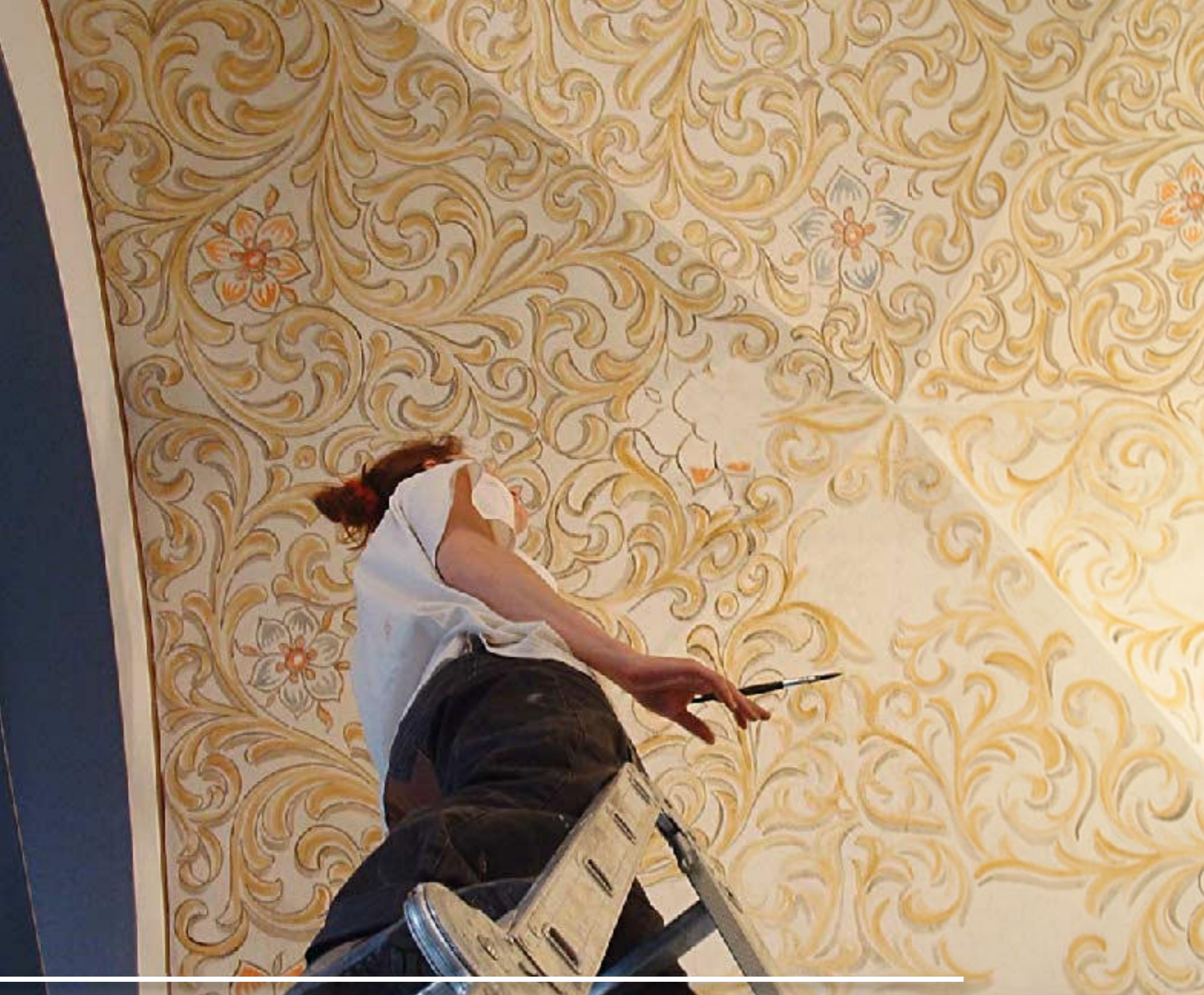
Binder for mixing full-tone wall and ceiling paints for the interior. With KREIDEZEIT Full-tone Binder and KREIDEZEIT pigments you can easily mix full-tone wall paints according to your own wishes.

Product Characteristics

- Powder for mixing with water
- easy to apply
- low odour
- highly diffusible, antistatic
- without titanium white
- dry wipe resistant and several times overcoatable
- free from preservatives and synthetic resin binders



Full-tone Binder



Until the 1960's distemper paints have been the standard choice for interior paint in West Germany and in East Germany, even until the wall came down. Due to the wide spread usage of ready-to-use synthetic dispersion paint the distemper paint vanished from the market despite all of its advantages. We preserve this treasure!

Distemper paint is ideal for ceilings because of its evenly cloth-matt look. On stucco surface distempers are first choice, since they can easily be removed with water. This would prevent the fine structures from being clogged beyond repair.

They are also appreciated highly by people suffering from allergies because of their simple emission-free and odourless ingredients. Distemper is a low-tension paint and therefore often the last hope on difficult and worn out surfaces. It is suitable for almost all interior wall construction materials: all plasters, all dispersion based colours, wallpaper, stone, dry wall.

Despite all advantages there is one disadvantage: distempers are bound weakly and not waterproof. So it can only be painted over with distemper.

Product characteristics

- Powder, mix with water
- very cost-effective/ our best value for money paint
- naturally white through marble powder
- highly diffusible
- can be tinted with all earth and mineral pigments
- without preservatives
- Tested and rated "Sehr gut - Very Good"
(Test: "Wall paints for people suffering from allergies" in ÖKOTEST Bauen & Renovieren edition 4- a popular German magazine introducing and testing environmentally friendly construction materials)

Distemper





Silicate Paints

Silicate Paint

Two-component paint (potassium waterglass + silicate white), for durable and water- and weatherproof coatings interiors and exteriors/facades. Both components, KREIDEZEIT Silicate White and KREIDEZEIT Potassium Waterglass, are mixed together shortly before application

GekkoSOL Paint

GekkoSOL paint is a mineral-based wall paint with very high opacity. We recommend it especially for renovation of old plastic-based coatings, especially acrylic-based dispersion paints.

GekkoSOL FINE-Grain

GekkoSOL FINE-Grain (grain: 0.5 mm) can be used as a surface finish or as a bonding bridge for subsequent treatments with products such as casein paints, lime paints and our lime or casein based plasters.

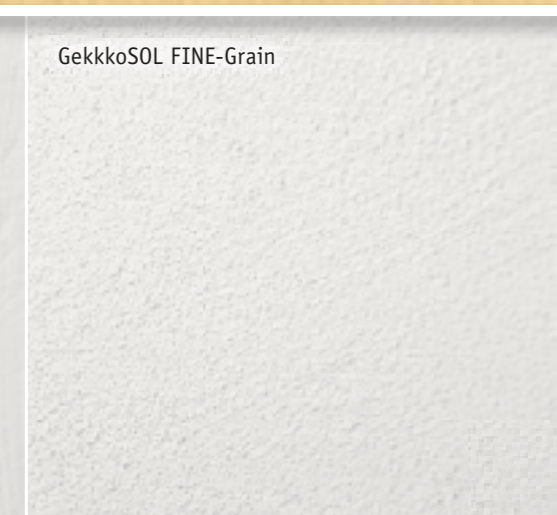
GekkoSOL Thinner

For diluting GekkoSOL Paint and GekkoSOL FINE-Grain. They must not be diluted with water due to the special adhesion formula.

GekkoSOL Paint



GekkoSOL FINE-Grain



Wall Glazes



Wall glaze is a colourfully pigmented, yet not opaque, transparent paint. It revives surfaces, which looked rather dull and one-dimensional before. This is not magic, but more due to a principle of perception: The transparent layers on top of each other trick the eye to see some depth on the surface of the wall.

Usually the glaze would preferably be applied on a light coloured surface, ideally a white surface. In this way the glaze achieves the highest brilliance and plasticity. For the characteristic look particularly fine grained waterproof surfaces are suggested; e.g. our Lime Paint -textured-, Lime Wall Finishes and GekkkoSOL Fine-Grain.

Products

- Wall Glaze Binder
 - for lime or casein based sub-surfaces and all absorbent plasters
- GekkkoSOL Lazure
 - on GekkkoSOL paints and untreated wood

Pure lime-based products have a positive impact on the room climate. Lime is naturally waterproof, antistatic, highly diffusible, mould inhibiting and releases no VOC. These characteristics make lime a superbly fitting raw material especially for people with allergies.

For over 14.000 years lime has proven itself as a building material and coating agent. It is practically infinitely available and, as for the overall life cycle, perfectly environmentally friendly. Lime is highly light reflective and, through the sublime crystalline structure, it has its own unique surface look.

Kreidezeit lime based products are up-to-date to today's requirement of easy handling and can be used on modern surfaces like dry walls, plaster fibre plates and gypsum plaster. In our factory in Sehlem we manufacture a vast variety of lime based products for different surface designs including bright white marble lime, local hydraulic lime and a fine selection of marble and quartz sand.



Lime Based Products



Kreidezeit Lime Paints are versatile wall paints for interior and outside usage and are easy to use, even by non-professionals. They distinguish themselves due to enormous binding and adhesive capabilities, resulting in wipe-proof and splash-proof surfaces – without containing synthetic resin based binders and synthetic pigments like titanium white. Furthermore, only two coats cover sufficiently.

The marble sands in Lime Paint -textured- and Lime Paint -high texture- give smooth surfaces a fine plaster texture and keeps the look of existing fine-rough plasters, which would be gone by over-coating with smooth wall paints. It results in ideal sub-surfaces for vivid wall glazes and evens out slight structural differences from the underlying surface. Pores and fine cracks can be whitewashed.

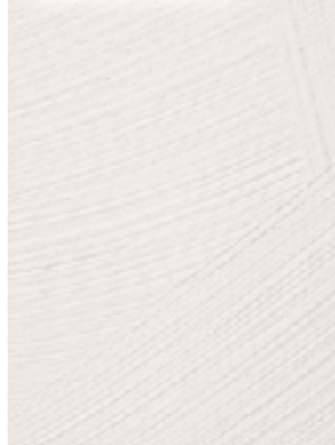
Product Variations

- Lime Paint -smooth-
untextured, smooth
- Lime Paint -textured-
fine Brush-on plaster look, 0.5 mm max. grain size
- Lime Paint -high texture-
strong textured Brush-on plaster look, 0.7 mm max. grain size

Product Characteristics

- ready to use
- matt, natural white
- naturally mould inhibiting, suitable for wet rooms
- no VOC, odourless
- can be tinted with all earth and mineral pigments

Lime Paint -smooth-



Lime Paint -textured-



Lime Paint -high texture-



Lime Paints

Lime Wall Finishes



Our Lime Wall Finishes are versatile purely lime based plasters for interior usage. The creative possibilities of surface design span from rough to fine and smooth-shiny texture. Kreidezeit Lime Wall Finishes are ready-to-use and don't need further coatings.

Kreidezeit Lime Wall Finishes are easy to use even for non-professionals. The drying time is intentionally made to be slow in order to give enough time after application to work out the desired texture.

They are ideal for moist areas through high diffusivity, long lasting alkalinity and prevent condensation water on their surfaces.

Fine Marble lime and Italian marble sand give these plasters a high whiteness and very good binding and adhesion ability, entirely without containing synthetic resin binders and synthetic pigments like titanium white.

By the application of diluted vegetable based soap the surfaces can be made water repellent and are tintable with all Kreidezeit pigments. Many additional creative effects can be achieved through decorative aggregates (coloured Glass Pebbles, Muscovite Mica, Barley Straw Chaff).

Lime Wall Finishes are recommended for preparation of sub-surfaces for our plaster products Stuccolustro, Marmorino, Tadelakt.

Lime Wall Finish -smooth-

- Grain size 0.5 mm / max. application layer 2 mm
- For lightly structured over semi-rough to smooth and shiny surface designs. Recommended sub-surface for KREIDEZEIT Stucco Fine Render and Stuccolustro.

Lime Wall Finish -fine-

- Grain size 0,9 mm / max. application layer 5 mm
- For averagely structured over fine-rough to smooth surface designs.
- Recommended sub-surface for KREIDEZEIT Stuccolustro and Marmorino.

Lime Wall Finish -medium-

- Grain size 1,4 mm / max. application layer 8 mm
- For rough to fine-rough structured surface designs.
- Recommended surface for KREIDEZEIT Marmorino and Tadelakt.

Product Characteristics

- highly diffusible
- no VOC
- splash-proof
- evens out slightly uneven surfaces
- ideal sub-surface for wall glazes



Lime Wall Finish -smooth-

Lime Wall Finish -fine-

Lime Wall Finish -medium-

Lime Wall Finishes

Mould Treatment

Fungi Sanifying plaster rubbed with a sponge

Fungi Sanifying plaster smoothed with a trowel



Our Biocide-free Solution

Alcohol

removes small mildew stains with a one-off effect. Our pure alcohol can quickly and easily remove mould stains. The fungus is removed on the surface, but this is only "first aid". Thereafter, further treatment should be given as soon as possible by the following means:

Fungi Stop

encapsulates spores, binds them permanently and thus protects them from further spread. At the same time, the surface becomes strongly alkaline, which prevents resettlement. The mould remover does not cover the colour and should be painted over with lime paint if necessary. It adheres to almost any surface and is also suitable, for example, for renovating infested back walls of cabinets. Works for many months.

Lime Paint -smooth- and Lime Paint -high texture-

are our proven means for the permanent removal and colour covering of mould. A double coating is usually sufficient to prevent the mould from recurring. Due to its long-lasting alkalinity, lime has the best effect against moulds.

Fungi Sanyfying

is the best remedy against mould infestation on cold building parts such as poorly insulated window lintels and reveals. Also infestation in cold bedroom corners and bathrooms, which is usually associated with condensation moisture, can be permanently controlled with Fungi Sanifying Plaster. Its enormous absorbency ensures a dry and alkaline surface that permanently prevents further infestation.

Our recommendations refer to fungal infestation of max. 5 m². In case of massive infestation of whole rooms or even buildings, an expert should be consulted. If in doubt, you can discuss your issue with our technical advisors. Structural defects and special features can impair the effect of the products presented.

Our decorative Polished plasters are purely lime bound. They neither contain synthetic resins nor transparency reducing synthetic pigments like titanium white.

These surfaces are naturally anti-fungal. A further treatment with pure vegetable soap gives additional brilliance and makes the plaster water-repellent. That is why they are perfect for interior use even in rooms with wet environments.

The smooth surface makes these plasters very stain resistant and easy to clean.

In combination with Kreidezeit pigments harmonic colour shades can be achieved. A finish with Punic wax gives extreme brilliance in dry rooms whereas pearlescent pigments give a shimmering, refined finish.

Product Characteristics

- purely on mineral basis
- odourless and no VOC
- highly diffusible
- waterproof
- low tension

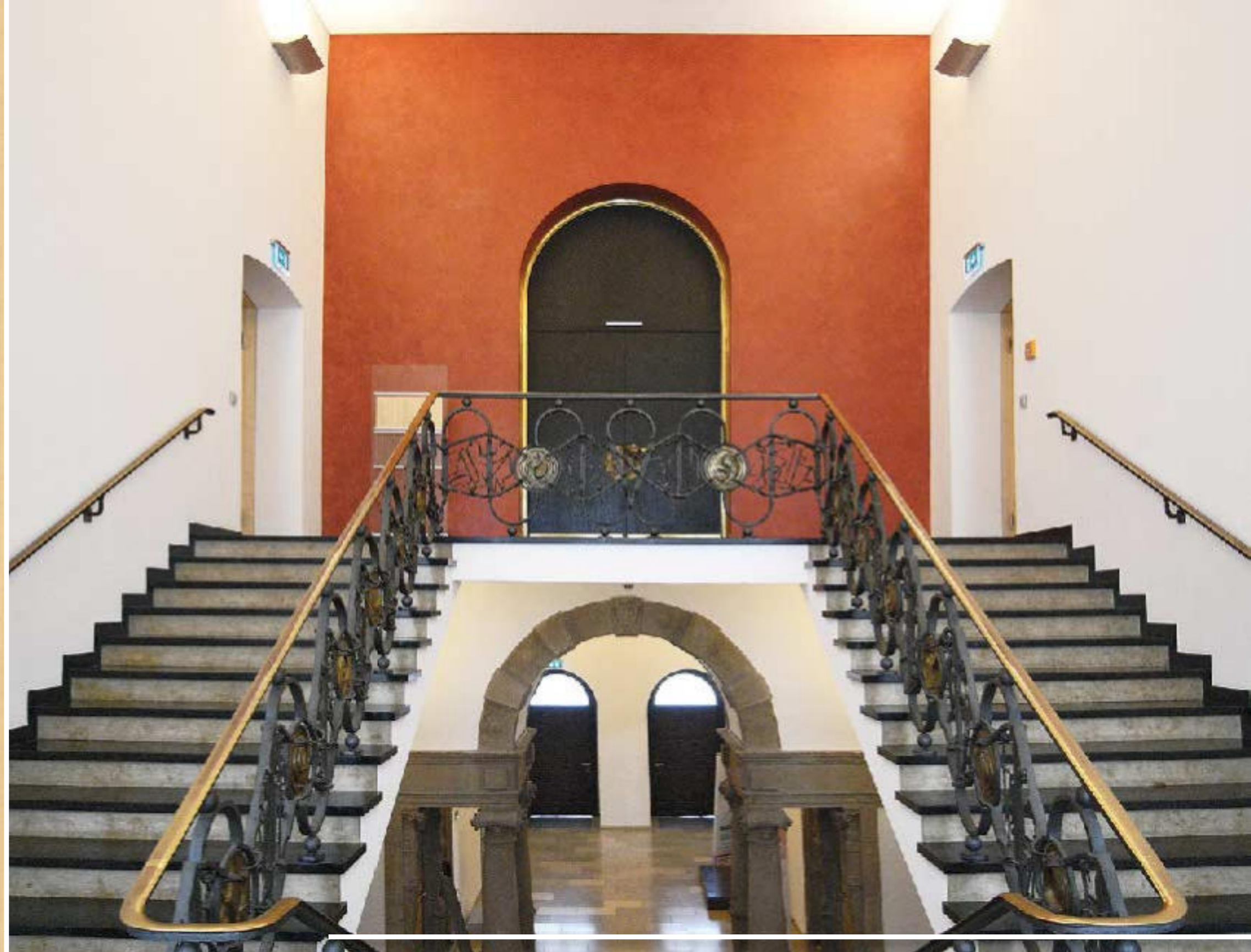
Decorative Polished Plasters

Stucco Fine Render

Stucco Fine Render is for wafer-thin Stucco layers on smooth surfaces. With just two layers the typical Stucco look can be achieved. Even for beginners this technique is easy to achieve by making a simple application with a trowel.

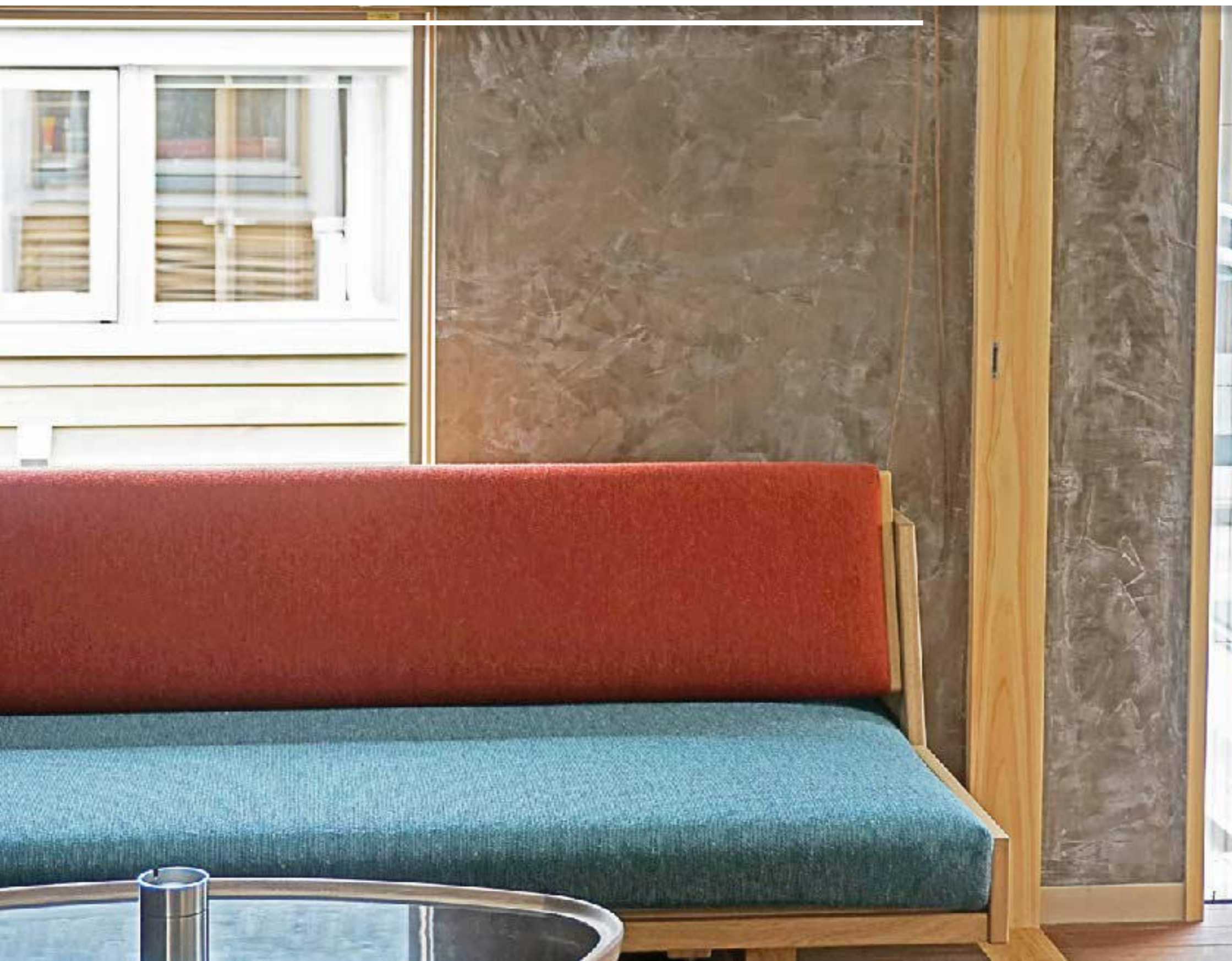
Stuccolustro

Stuccolustro is a filling which uses fine marble sand. The resulting slightly thicker layer provides a vivid optical depth and translucency. It is recommended for surfaces with shiny and transparent looks of polished marble. Wonderful shades of colour can be created by using the Venetian plaster technique and then burnishing with a trowel. With the product variant Stuccolustro Basis, especially vivid colours can be achieved.



Decorative Polished Plasters

Decorative Polished Plasters



Marmorino

A polishing plaster covering the complete surface of subtle uniform elegance. Changing light has the unobtrusive oscillating effect of polished natural stone. Marmorino is only applied with a smoothing trowel and is then burnished.

Tadelakt

Tadelakt is a traditional plaster technique from Morocco, already widespread and popular since ancient times. The surface is treated with a special polishing technique using a smooth stone. The circular polishing moves result in the typical fine cloudy Tadelakt look. In this way the surface ends up in an expressive, shiny surface of warm, silk-like texture. Tadelakt is bound with hydraulic lime. This makes it possible to use it in wet rooms like showers and saunas.

We offer workshops about polishing techniques regularly in interesting and hands-on seminars. You can find the dates on our homepage.



Decorative aggregates are mixed into our wall paints and plasters. They enhance creative possibilities of our products for the surface design.

Vermiculite

Vermiculite is a very light, natural, lightly beige-coloured mica that has been bloated under heat. Worked into a thin-layered plaster, it creates a shiny golden inclusion. Then it is burst while scraping the surface after a short drying time.

Muscovite Mica

Muscovite Mica is a natural light-coloured mica for pearlescent effects on paints or plaster. Muscovite is a shingle-type natural mineral with a glass-like or mother-of-pearl-like surface and silver shiny light reflexes.

Barley Straw Chaff

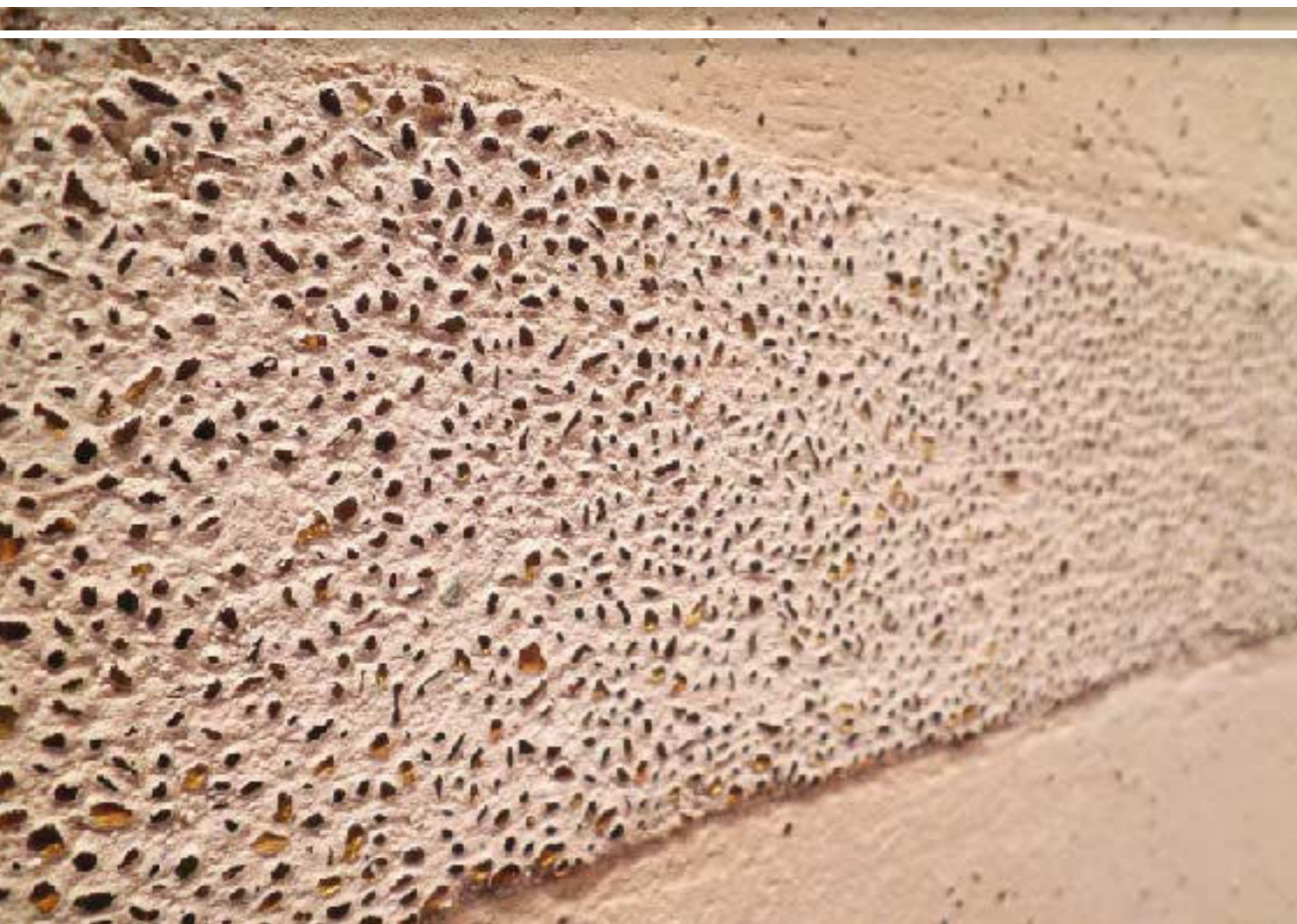
For Barley Straw Chaff finely chopped straw is used as an aggregate for Kreidezeit wall colours and plasters, which gives a natural texture and subtle light effects on the surface.



Decorative Aggregates



Decorative Aggregates

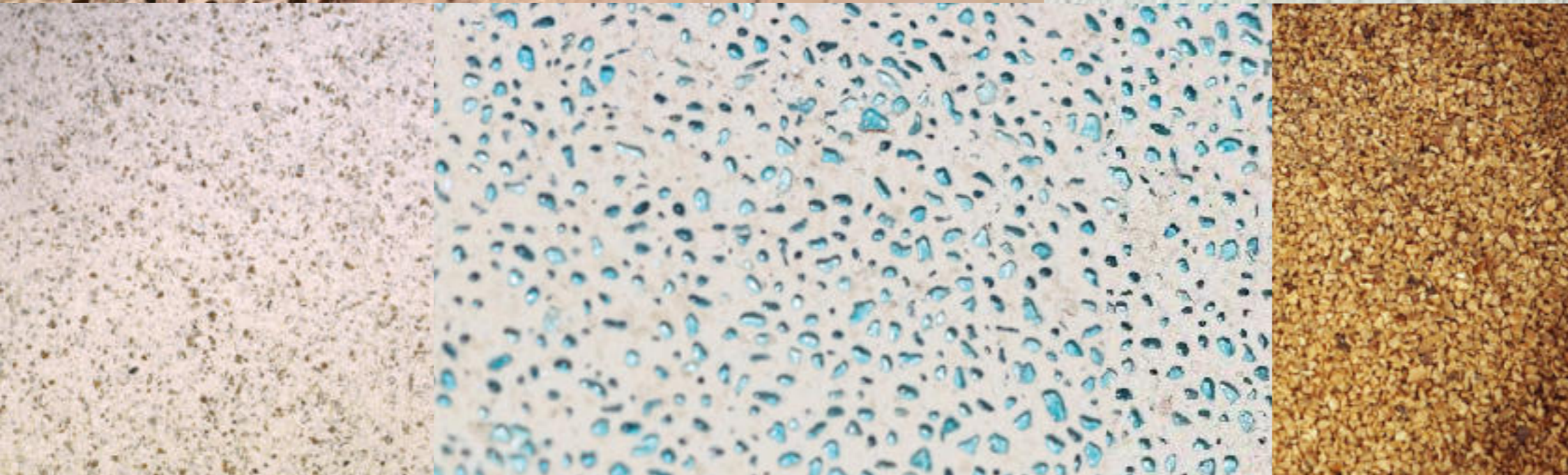


Glass Pebbles

Glass Pebbles are round shaped grit the size of about 1-3 mm made from coloured glass without sharp edges. It is available in 6 transparent colours and black. When properly applied with Kreidezeit plaster, the results are shiny colourful inclusions with depth. The effect on the surface depends on the lighting.

Walnut Shell Granules

Fine granulate made from walnut shells gives our plasters a finely dotted structure.



Earth and Mineral Pigments

Our coloured pigments can be used with all of our Keidezeit wall paints and plasters as well as with oil glazes and oil paints.

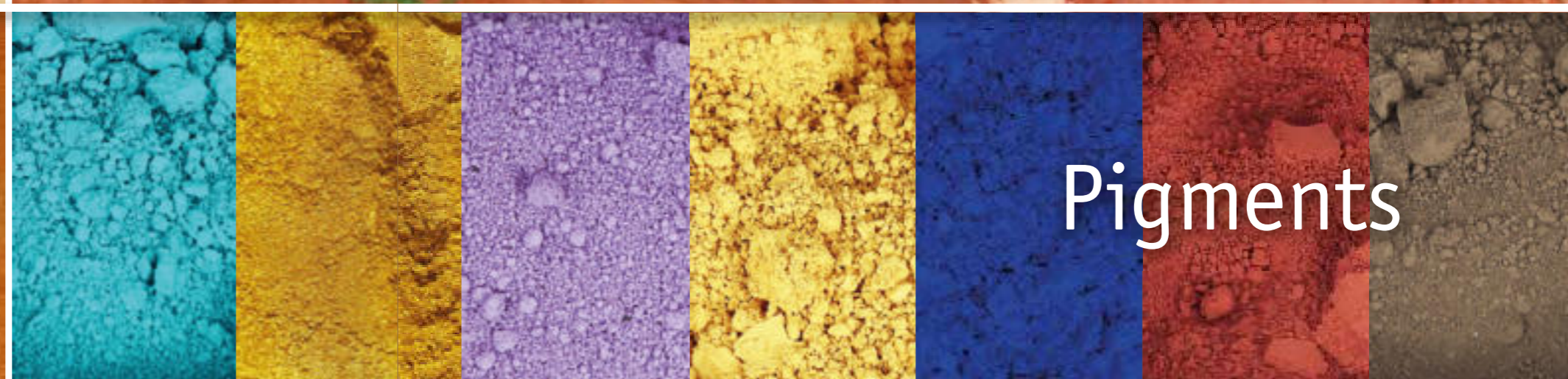
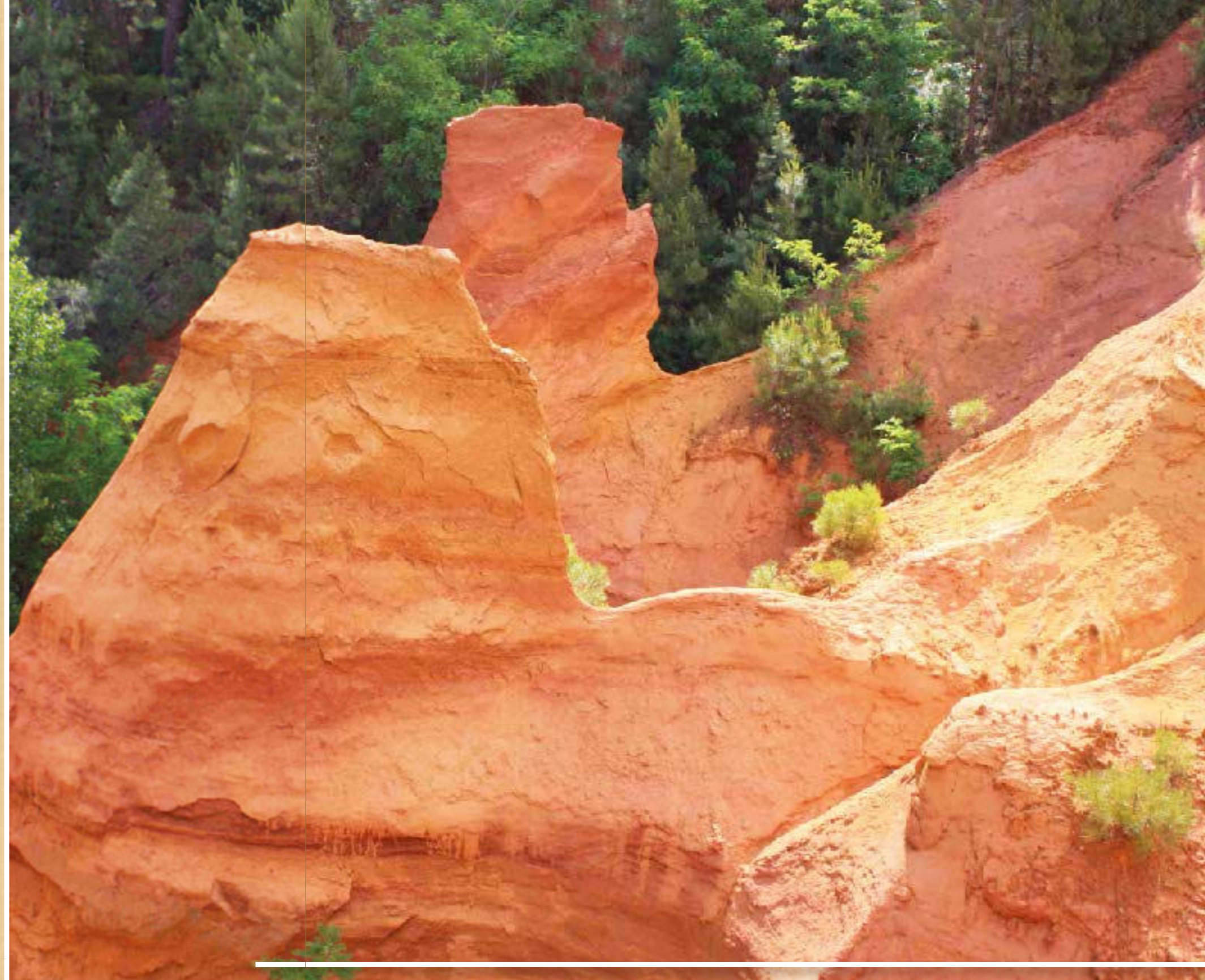
The product range currently includes about 40 earth and mineral pigments- pure earth pigments from all over Europe (e.g. Cypriot umbers and ochre from Roussillon, ultramarines, spinels and pure iron oxides). All pigments are non-poisonous, light-fast and can be mixed with one another. Almost any imaginable colour shade can be mixed. Some suggestions can be found in the Kreidezeit colour charts.

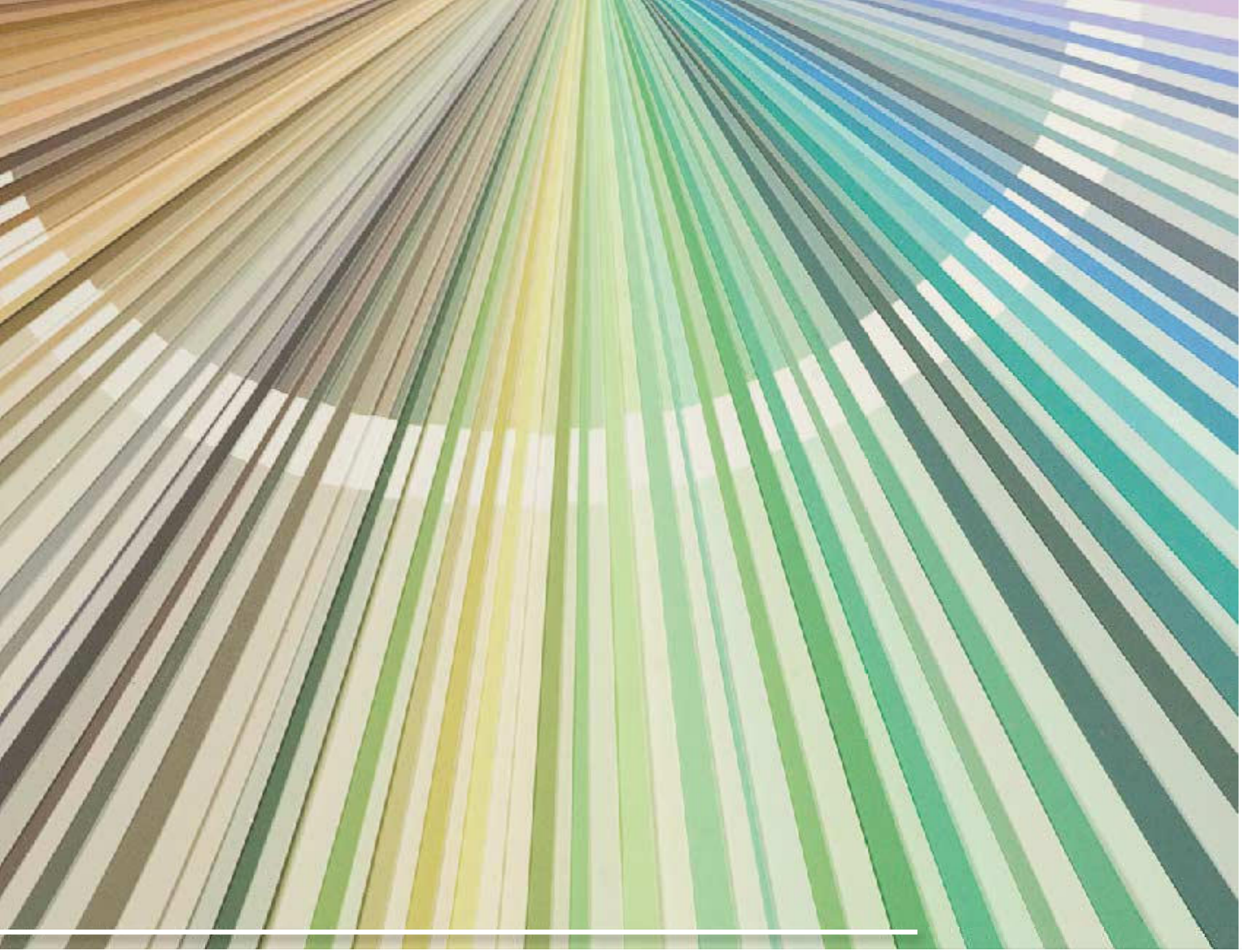
- without preservatives
- pulverized, dry
- pure pigments without aggregates and binders

Pearlescent Pigments

Pearlescent Pigments give walls and wood surfaces fascinating glitter effects, pearlescent shimmer or metallic shine. They are structured similar to pearls. A natural glimmer core is wrapped with one or more layers of metal oxides (e.g. titanium oxide or iron oxide).

Pearlescent pigments are available in different colour shades: expressive gold, silver, bronze and interference pigments with fascinating colour effects depending on the perspective. Pearlescent Pigments can be used for transparent colourless binders like Carnauba Wax Emulsion, Punic Wax, wall glaze binders, oil glazes and smoothing soap. They are non-poisonous, light-fast and compatible with all binders.





Colour Fan Wall Paints & Plasters

With the help of our colour fan you can design your rooms in colour. The right formulation for your desired shade can be found quickly. The colour shades can be mixed in all products for wall design, whether wall paint, brush-on plaster, plaster or smoothing techniques.

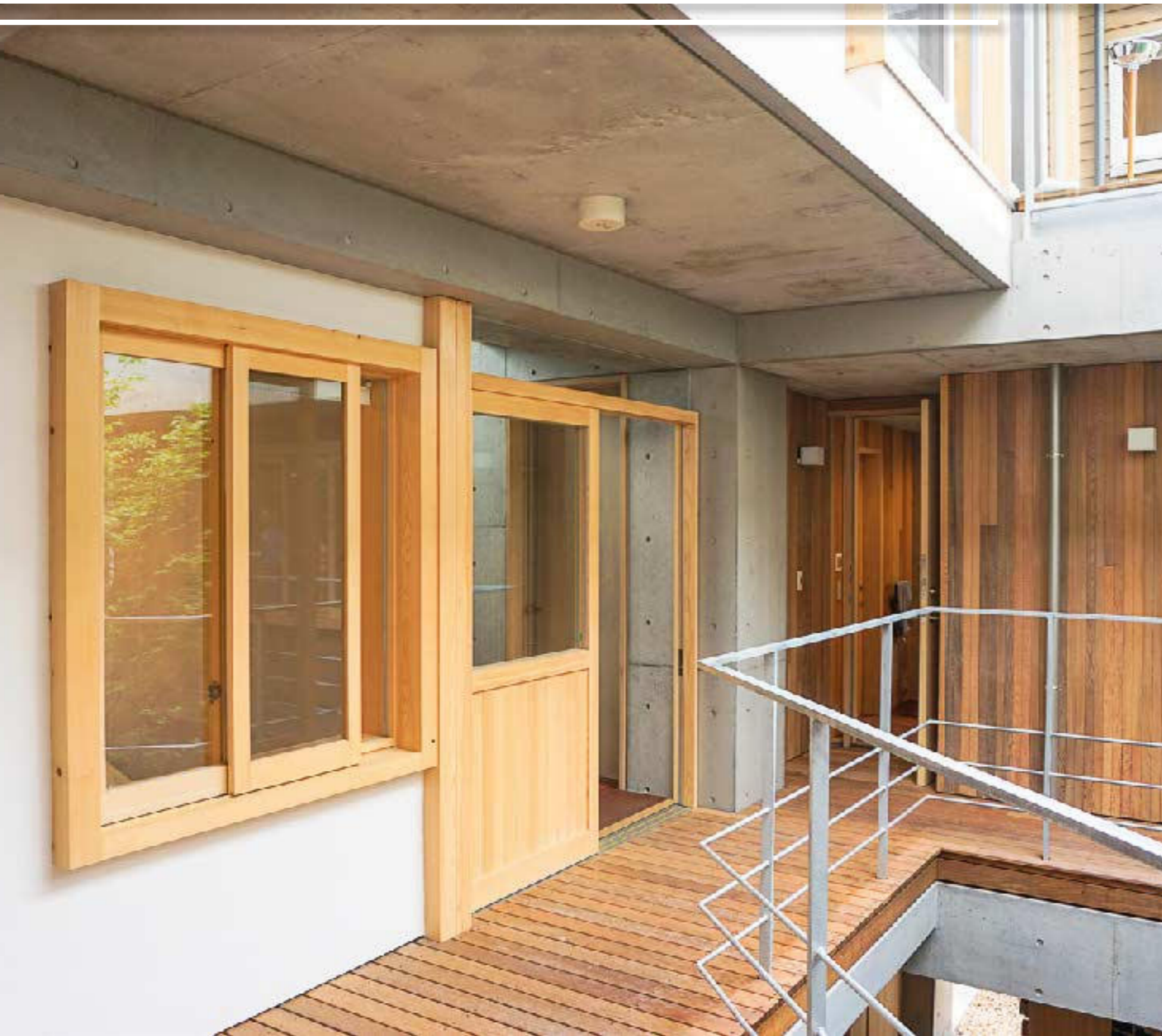
The 250 colour shades in our colour fan are made of 24 earth and mineral pigments. The colour shades are composed of one or two pigments and are each represented in three shades (A, B, C), plus 10 white shades in shade D.

The product tables contain the recipes for the various products. They indicate the pigment content per 1 kg of powder or per 1 litre of wall paint or plaster.

Colour Fan



Wood Surfaces



Wood is a unique material and has always been used by humans for construction. The benefits, including the look and the organic surface, which is comforting to the tactile sense, are its constructive characteristics: Elasticity and stability. To keep these qualities and even enhance them natural oil-based paint is the best choice.

The integral part of Kreidezeit wood paint is the well drying linseed oil. Used for hundreds of years it has played a vital role in the preservation of historical buildings. Linseed oil is obtained by pressing seeds of the flax plant. Due to the extremely small molecules (about 50 times smaller than synthetic resin molecules) it penetrates deep into even smallest wood pores. For the life of the wood upon which it is used, it stays elastic and highly diffusible. It reliably prevents cracks in coats and water logging in wood. We manufacture a variety of products based on linseed oil, pine resin, stand oil, Portuguese balsam turpentine oil and mineral pigments for the treatment of wood.

Carefully thought-out formulas using environmentally friendly and sustainable raw materials based on the science of building physics guarantee the highest safety in application and use. In addition, no hazardous waste is left behind when the materials have to be disposed. These factors make natural Kreidezeit products superior for the treatment of wood in comparison to wide-spread fast drying acrylic- and synthetic resin-based products in many respects. Our oil-based products are free of lead, barium and cobalt.

All products are subject to strict internal quality controls. All raw materials are selected with the utmost care. Of course thorough declaration of all raw materials used is essential to us.

Oils & Waxes

solvent-free

Hard Oil

Hard Oil is an oil paint that is universally applicable for all wood surfaces in the interior areas; for example, flooring, stairs, furniture, worktops, tables, doors and windows. Treated surfaces are ready for heavy-duty usage and are step-resistant.

Hardwax-Oil

This product combines the excellent characteristics of our hard oil with an additional wax treatment in one go. The hard Carnauba wax enhances the pore-filling ability and gives a silk-like and comfortable surface, which is extremely easy to clean.

Product Characteristics

- solvent- and water-free
- sweat and saliva resistant according to DIN 53160
- can be tinted with all earth and mineral pigments





Multi Purpose Wax

Due to the usage of linseed oil as binder and natural beeswax the wood surface gets a typical vivid honey-coloured wood grain. The beeswax fills pores and results in a silky-velvety surface.

Safflower Multi Purpose Wax

Non-yellowing oil extracted from the Safflower and discoloured beeswax gives the surface a typical oil-enhanced wood grain opposite to the honey coloured shade typical from linseed oil treatment.

Linseed Oil Varnish

Linseed Oil Varnish is the traditional and long-proven surface treatment for many kinds of wood in interior areas. It is honey coloured and wood grain enhancing. This product is well suited for less heavy-duty surfaces, such as: furniture, panels and woodwork. Linseed Oil Varnish can also be appropriately used as a solvent-free primer for coloured oil glazes and covering oil paint.

Product Characteristics

- solvent- and water-free
- sweat and saliva resistant according to DIN 53160
- can be tinted with all earth and mineral pigments

Multi Purpose Wax

Safflower Multi Purpose Wax

untreated



Oils & Waxes
solvent-free

Oils & Waxes

Floors, Worktops



Floor Hard Oil

Our tried and proven classic since 1987, Floor Hard Oil is an oil-based treatment universally applicable on all wood surfaces in interior areas (flooring, stairs, furniture, worktops, tables, doors and windows). It is step-resistant and heavy duty. Using Portuguese balsam turpentine oil as a solvent makes handling easy and enhances the oil's ability to penetrate even dense types of wood.

Floor Hard Wax


An additional surface treatment with hard wax is recommended for smooth wooden floors which are primed with KREIDEZEIT hard oils. Applicable on floors, doors, stair railings and furniture.

Wood Hard Oil

Wood Hard Oil is our fastest drying, hardest and most resilient oil for wood surfaces in the interior area. It is suitable for very absorbent types of wood like conifers, pine and beech. Where it proves its strength, Wood Hard Oil is extremely step-resistant and heavy duty.

Worktop Oil

KREIDEZEIT Worktop Oil is a deep-penetrating, hard-wearing surface protector for countertops, tables and furniture of practically any type of wood – perfect for the kitchen and dining area. Sweat and saliva resistant according to DIN 53160.



GekkoSOL Lazure pigmented with titan-white

Tempera Paint

For matt coatings on untreated wood surfaces indoors. Tempera Paint is used for Shabby Chic effects on furniture and for paints in low-stress areas: Ceilings, wall panels, beams.

GekkoSOL Lazure

GekkoSOL Lazure is a glaze based on silicate. The product contains no solvents and is absolutely odourless. GekkoSOL Lazure is ideal for coatings on wooden ceilings and wall-panels and replaces the traditional beer-based glaze, but without the strong pub-like smell.

Mixed with titanium white you can achieve the look of white-washed wood. Rubbed in with a sponge, this white glaze brightens wood up without looking "coated" and protects from further darkening.



Shabby Chic Set

With the Shabby Chic Set, expressive surfaces in vintage style can be created on untreated woods and wooden furniture indoors. The included Tempera Paint creates a wonderful matt-velvety impression.

A common technique is to prime the wood first in dark and then paint it with an opaque coat in pastel shades or white. The covering coat is then sanded through or scraped off in places.

Content Of The Set:

- 1 kg Tempera Paint
- 50 g Casein Binder
- 50 ml Safflower Oil
- 180 ml Safflower Multi Purpose Wax
- 75 g Pigment Umber black-brown
- 75 g Pigment Spinel turquoise
- 75 g Pigment Umber dark
- 1 Manual

Product Characteristics

- solvent-free
- Powder for mixing with water
- dirt- and water-repellent
(if waxed mit Safflower Multi Purpose Wax)
- can be tinted with all earth and mineral pigments

Shabby Chic



Garden Furniture Oil



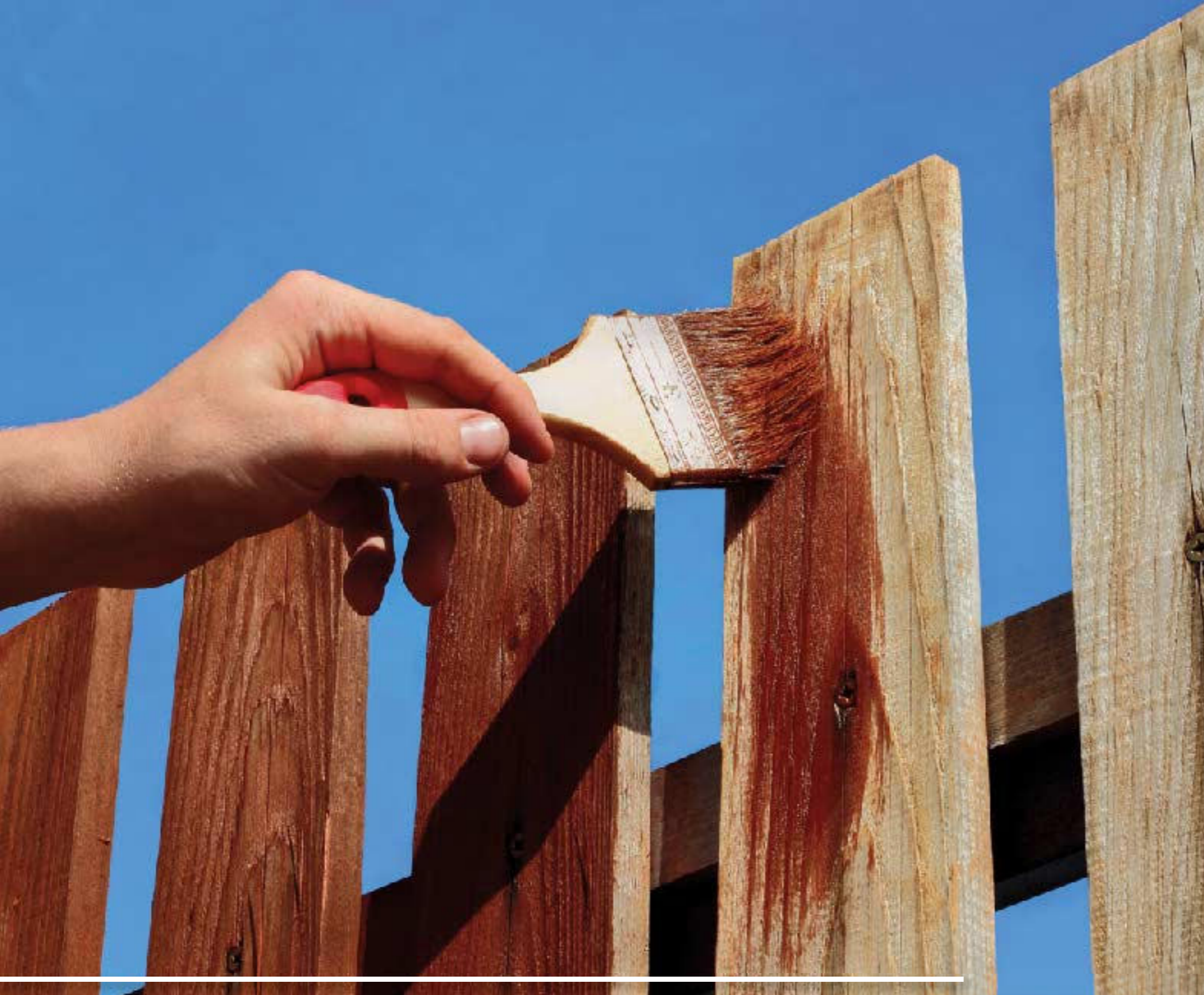
Garden Furniture Oil is especially optimized for the special needs of weather exposed wooden garden furniture.

It protects, maintains and brings out the natural wood grain. Weathered wood furniture looks renewed and neat again after application.

For individual colour design the Garden Furniture Oil can be tinted with all earth and mineral pigments.

Product Characteristics

- sweat and saliva resistant according to DIN 53160
- solvent-based, high-yielding
- does not tear and embrittle
- diffusible, antistatic, contact warm
- transparent
- honey tone, emphasizes the wood grain
- excellent penetration
- easy to process,
- easy to repair



Wood Lazures are transparent and/or coloured paints for exterior wood, e.g. wooden framework constructions, façades, fences, garden furniture or playground equipment.

In manufacturing we use a combination of linseed oil, several stand oils and colophonium resin. This formula guarantees superb adhesion with wood and results in a weather-proof and elastic coating. Due to the permeability of the wood glaze moisture from inner parts of the wood is transported outside.

When weathering, the glaze does not blister or crack and will not flake, but wears down bit by bit over time. Maintenance is easy- simply clean and paint over. Sanding is not necessary.

Product characteristics

- sweat and saliva resistant according to DIN 53160

colourless wood lazure

Colour can be mixed by yourself, for exterior use light-fast pigments should be used for permanent UV-protection

coloured wood lazure

already tinted in 9 classic wood colours (pine, larch, light oak, antique oak, teak, chestnut, wenge, palisander and ebony)

Wood Lazure



Stand Oil Paint



The Kreidezeit Stand Oil Paint system is an enhancement of centuries-old and proven oil formulas with optimal permeability.

Stand Oil Paint is a covering and resin-free paint for wood and metal for interior and exterior use on wood framework, playground equipment, windows, doors and wood panelling. It does not blister, crack or flake, but stays elastic and wears down little by little. That is why it can be renewed even years after application with a minimum of effort by simply cleaning and painting over.

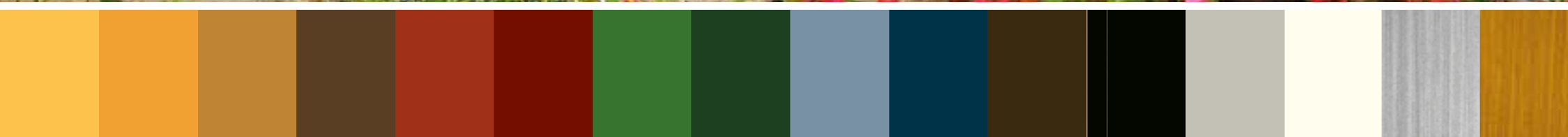
The layer structure of application is traditionally from "lean to rich":

1. Base Oil - penetrates deeply into the wood
2. Half-rich intermediate coat - extremely high opacity
3. Full-rich finishing coat - long lasting weather protection

Kreidezeit Stand Oil Paint is available in 14 colour shades, which can be mixed with one another. We also offer a mixing chart for approximately 100 colour shades. Stand Oil Paint contains highly light-fast and weather-proof earth and mineral pigments. We manufacture additional, individual colour shades on request.

Product characteristics

- sweat and saliva resistant according to DIN 53160



Even the Eiffel tower has been protected from rust with the “good old armour scale paint”. Thousands of locomotives and wagons have been coated with it. Experience clearly demonstrates: This pure linseed micaceous iron ore paint guarantees permanent protection from rust.

Micaceous iron ore is a naturally occurring shiny-black pigment in the shape of scales, building a protective coat on metal, which prevents water from sinking in. It is mentioned in old painter books as “armour scale paint”. Kreidezeit Rust Protection Paint contains a huge quantity of mica.

Due to the small size of molecules, linseed oil is an excellent coating and penetrates remaining rust particles. They will be reliably enclosed and prevented from further rusting. This principle is also called „passive corrosion protection“.

Additionally, easy rust removal by hand is sufficient for most conventional materials (to SA 1 degree – “Brush-off Blast Cleaning”).

Kreidezeit Rust Protection Paint scored best in comparison with 33 rust protection paints, 30 of them have been conventional paints. (ARD Ratgeber Technik, a popular German consumer information programme on national TV, in March 1999, conducted by the Institute for Corrosion Protection (IKS) in Dresden). Colour: anthracite grey, corresponding to DB 703



Rust Protection Paint

Cleaning & Care

Corfu Soap

A pure olive oil soap, made in a manufactory on the Greek island of Corfu. Hand-boiled in a procedure proven for over 150 years from regionally produced olive oil.

Without any addition of dyes, preservatives and fragrances. Due to its re-lubricating effect, it is excellently suited for the gentle cleaning of oiled or waxed wood surfaces. This is especially true for floors. Due to its low cold water solubility, this soap is particularly suitable as sole treatment for „soaped wooden floors“, offering good protection and step resistance. Corfu soap is pleasantly mild to the skin and also cares for more sensitive surfaces such as marble floors and linoleum. Corfu soap can also be used very well for cleaning brushes and paint rollers.

Marseille Soap

Kreidezeit Marseille soap is a pure vegetable-based soap simmered out of palm kernel oil and coconut oil. Like Corfu Soap, Marseille Soap can be used for cleaning and care.



Polishing Soap -Concentrate-

Polishing Soap is used as a finishing treatment for a high gloss effect on Stuccolustro and Tadelakt surfaces. Gently dissolved in water and worked into sufficiently alkaline lime surfaces a part of the natural soap is changing into so called lime soap, which gives the surface of the wall hydrophobic and dirt-resistant characteristics without limiting permeability.

Olive Care Soap

Olive care soap is a liquid household soap for the cleaning of oiled or waxed surfaces, as a cleaner for oil-contaminated paint brushes and rollers as well as for soaping wooden floors. Olive care soap also maintains more sensitive surfaces such as marble floors and joints.

The base of this product is our Corfu Soap, a pure olive soap, made on the Greek island of Corfu.



Stuccolustro with /without Polishing Soap



Cleaning & Care

Carnauba Wax Emulsion - Concentrate -

Kreidezeit Carnauba Wax Emulsion maintains and protects oiled wood surfaces, especially flooring. It can be used as an additive for the cleaning and rinsing water, but can also be applied directly. Carnauba Wax Emulsion is one of the hardest natural waxes and gives dull surfaces a silky gloss.

Window Care Set

The Window Care Set is recommended for cleaning and care of our Wood Lazures and Stand Oil Paints outdoors. The maintenance of an oil paint outdoors is useful. This makes a renovation unnecessary for many years. Especially with windows care is much less expensive than a renovation. With the Care Soap soiled coats can be cleaned gently. A treatment with Window Care Oil brings dull areas back to their original color intensity and shine.

Care Oil

Care Oil for maintaining KREIDEZEIT Stand Oil Paints or tinted Wood Lazures exteriors. Restores the protective qualities and original colour of weathered surfaces that have become dull and pale. Application on windows, doors, wooden facades, timber frames, playground equipment, car ports and much more. It's easy to do and means you will have to re-paint less often.



Cleaning & Care

page 1	Kreidezeit Naturfarben GmbH
page 2	Ramona Meier & Emanuel Balassos, Harbarnsen
page 3-6	Kreidezeit Naturfarben GmbH
page 7	Fotolia ©Thomas Neumahr
page 8-9	Kreidezeit Naturfarben GmbH
page 10-11	Kreidezeit Naturfarben GmbH
page 12-13	Safran Ltd., Estland, www.safran.ee
page 14	Kreidezeit Naturfarben GmbH
page 15	Martin Link, Potsdam, www.lehmlink.de
page 16-17	Kreidezeit Naturfarben GmbH
page 18	Berrit von Monkiewitsch, Königslutter
page 19	Kreidezeit Naturfarben GmbH
page 20	Fotolia ©by-studi
page 21-25	Kreidezeit Naturfarben GmbH
page 26	Safran Ltd., Estland, www.safran.ee
page 27	Kreidezeit Naturfarben GmbH
page 28-29	Mediaart Studio GmbH, www.mediaart-jena.de
page 30-31	Kreidezeit Naturfarben GmbH
page 32	Safran Ltd., Estland, www.safran.ee
page 33-36	Kreidezeit Naturfarben GmbH
page 37	Maler Walecki, Paderborn, www.maler-walecki.de
page 38	oben links: Heiderose Wollner, Hamburg Kreidezeit Naturfarben GmbH
page 39-50	Kreidezeit Naturfarben GmbH
page 51	Fotolia ©dazarter
page 52-53	Kreidezeit Naturfarben GmbH
page 53	Fotolia ©Friedberg
page 55-56	Kreidezeit Naturfarben GmbH
page 57	Fotolia ©alexandre zveiger
page 58-61	Kreidezeit Naturfarben GmbH
page 62	Fotolia ©lianna2013
page 63-66	Kreidezeit Naturfarben GmbH
page 67	Fotolia ©PIXMatex
page 68-70	Kreidezeit Naturfarben GmbH
page 71	Planet Japan, www.planetjapan.co.jp
page 72-73	Kreidezeit Naturfarben GmbH
page 74-76	Kreidezeit Naturfarben GmbH

The printed colours in this brochure may differ from the original colours of the products.



Picture Sources