

Art. 841 . 01/2019



Kreidezeit Naturfarben GmbH

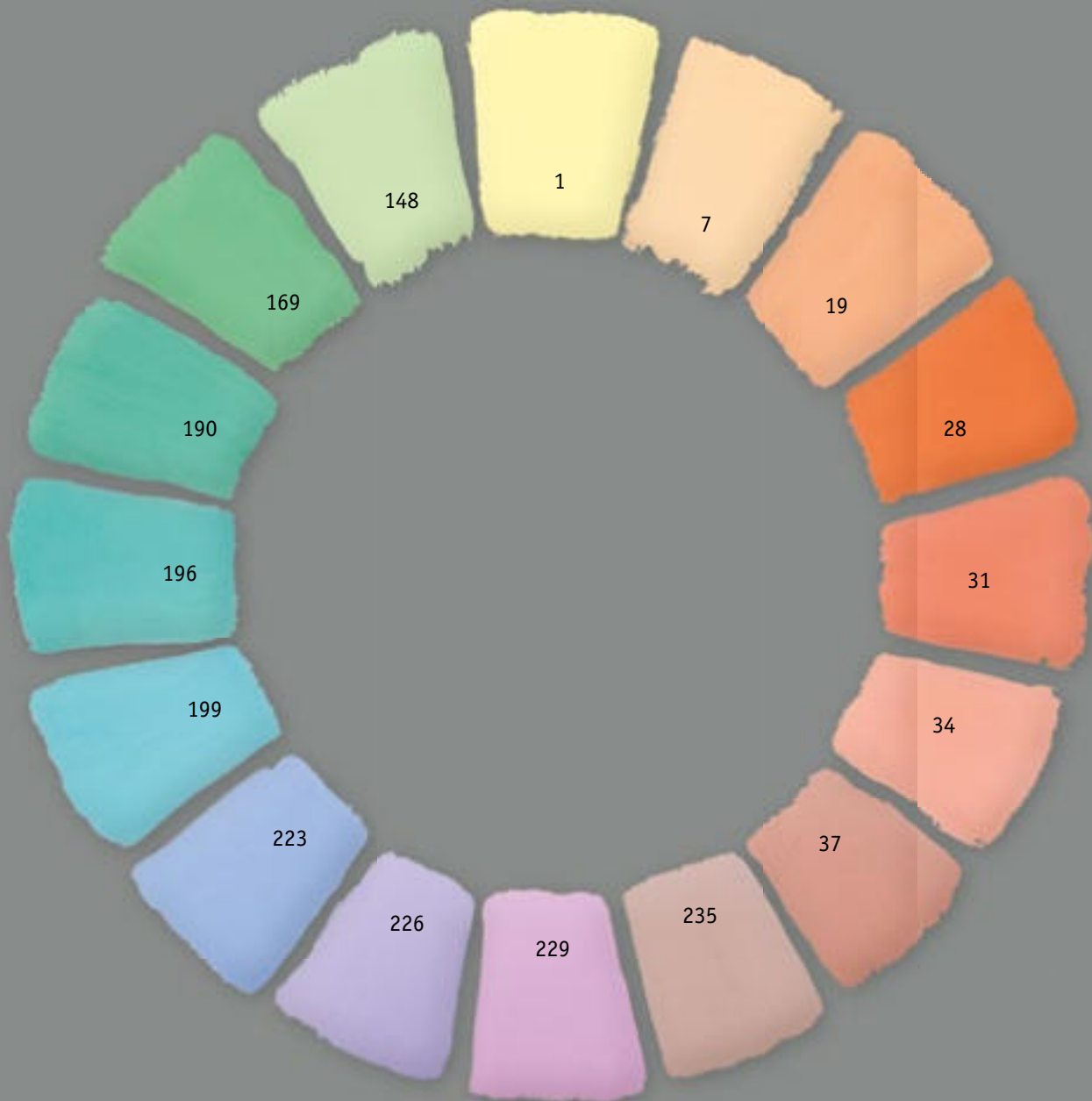
Kassemuehle 3 . D-31195 Lamspringe

Phone +49 (0) 50 60 - 60 80 650

info@kreidezeit.de . www.kreidezeit.de



Wallpaints & plasters



Content

Colour chart for wall paints and plasters	5
Product tables.	7
Decorative polished plasters	11
How to mix pigments	13
Ochre Yellow, Ochre Gold and Ochre Orange	16
Ochre Red	16
Siena Red	16
Iron oxides (orange, black).	19
Spinel pigments	20
Reds.	22
Additional pigments.	22
Colour effect, aesthetics	25
Umbers	28
Umbra Green, Dark	31
Oil paints/varnishes.	32
Ultramarine (Blue and Violet).	34
Resistance, non-fading	36
White tones.	40
Overview colour shades	42



colour chart for wall paints and plasters

The 250 colours of our chart have been manufactured from 24 earth- and mineral pigments.

The colours consist of one or two pigments and are shown in three different shades (A, B, C). Additionally there are 10 shades of white colour in D.

The product tables have been developed to enable the choosing of a colour with our different products. They each show the amount of pigments needed per 1 kg or 1 litre of wallpaint or plaster.

Important notice

Shaded Kreidezeit wall paints and plasters will lighten in tone while drying. Lime products shaded with ultramarine pigments have to be used within 24 hours. The colour effect will vary between our different products and materials. Clay based paints and plasters will appear lightly more muted, while lime based paints will appear more brilliant. We recommend that you paint a sample of the mixed product on a separate piece of material.

This brochure is designed as an inspiration, suggestion and instruction. The printed colors may differ from the original colours. More accurate colour reproduction offers the colour chart at your Kreidezeit dealer.



Product tables

Wall paints, powder:

Casein Marble Paint, Distemper, Vega Wallpaint, Clay Paint -smooth-

Lime Paints, liquid:

Lime Paint, Lime Paint -textured-, Lime Paint -high texture-

GekkkoSOL paints, liquid:

GekkkoSOL FINE-grain, GekkkoSOL Paint

Plasters:

Marble Fibre Render, Brush- and Roll-on Plaster, Lime Wall Finish (-smooth-, -fine-, -medium-), Clay Paint -textured-

Decorative polished plasters:

- Stucco Fine Render, Marmorino
- Stuccolustro
- Tadelakt

Instruction

1. Select a colour
2. Check the proportionate mixture on the back of the selected shade.
3. Multiply the required amount of product by the selected mixing ratio as taken from the product table.
4. For all products except our GekkkoSOL systems, mix the pigments well with some water before adding it to the wet product. To colour our GekkkoSOL products, mix the pigments with GekkkoSOL Thinner instead of water before mixing it into the product.

Wall paints, powder

pigment ratio for 1 kg of powder, white

shade	mixture ratio	single pigment	blended shade 1 : 1	blended shade 1 : 2	blended shade 1 : 5
A		100 g	50 g : 50 g	33 g : 66 g	17 g : 83 g
B		35 g	17,5 g : 17,5 g	12 g : 23 g	6 g : 29 g
C		7,5 g	3,7 g : 3,7 g	2,5 g : 5,0 g	1,3 g : 6,2 g
D		1,5 g	0,75 g : 0,75 g	0,5 g : 1 g	0,25 g : 1,25 g

Casein Marble Paint, Distemper, Vega Wallpaint, Clay Paint -smooth-

Plasters

pigment ratio for 1 kg of powder, white

shade	mixture ratio	single pigment	blended shade 1 : 1	blended shade 1 : 2	blended shade 1 : 5
A		50 g	25 g : 25 g	17 g : 33 g	8 g : 42 g
B		17,5 g	8,8 g : 8,8 g	5,5 g : 12 g	3 g : 14,5 g
C		4 g	2 g : 2 g	1,4 g : 2,6 g	0,7 g : 3,3 g
D		0,75 g	0,38 g : 0,38 g	0,25 g : 0,5 g	0,15 g : 0,6 g

Marble Fibre Render, Brush- and Roll-on Plaster, Lime Wall Finish (-smooth-, -fine-, -medium-), Clay Paint -textured-

Lime Paints, liquid

pigment ratio for 1 liter of liquid paint, white

shade	mixture ratio	single pigment	blended shade 1 : 1	blended shade 1 : 2	blended shade 1 : 5
A		100 g	50 g : 50 g	33 g : 66 g	17 g : 83 g
B		35 g	17,5 g : 17,5 g	12 g : 23 g	6 g : 29 g
C		7,5 g	3,7 g : 3,7 g	2,5 g : 5,0 g	1,3 g : 6,2 g
D		1,5 g	0,75 g : 0,75 g	0,5 g : 1 g	0,25 g : 1,25 g

Lime Paint, Lime Paint -textured-, Lime Paint -high texture-

GekkkoSOL paints, liquid

pigment ratio for 1 liter of liquid paint, white

shade	mixture ratio	single pigment	blended shade 1 : 1	blended shade 1 : 2	blended shade 1 : 5
A		130 g	65 g : 65 g	43 g : 87 g	22 g : 108 g
B		45 g	22,5 g : 22,5 g	15 g : 30 g	7,5 g : 37,5 g
C		10 g	5 g : 5 g	3,3 g : 6,6 g	1,6 g : 8,3 g
D		2,5 g	1,25 g : 1,25 g	0,83 g : 1,6 g	0,41 g : 2,1 g

GekkkoSOL FINE-grain, GekkkoSOL Paint





Decorative polished plasters

Stucco Fine Render, Marmorino

pigment ratio for 1 kg of powder, white

shade \ mixture ratio	single pigment	blended shade 1 : 1	blended shade 1 : 2	blended shade 1 : 5
A	38 g	19 g : 19 g	12,7 g : 25,3 g	6,3 g : 31,7 g
B	15 g	7,5 g : 7,5 g	5 g : 10 g	2,5 g : 12,5 g
C	4 g	2 g : 2 g	1,4 g : 2,6 g	0,7 g : 3,3 g

Stuccolustro

pigment ratio for 1 kg of powder, white

shade \ mixture ratio	single pigment	blended shade 1 : 1	blended shade 1 : 2	blended shade 1 : 5
A	44 g	22 g : 22 g	14,7 g : 29,3 g	7,3 g : 36,7 g
B	20 g	10 g : 10 g	6,7 g : 13,3 g	3,3 g : 16,7 g
C	5,4 g	2,7 g : 2,7 g	1,8 g : 3,6 g	0,9 g : 4,5 g

Tadelakt

pigment ratio for 1 kg of powder, white

shade \ mixture ratio	single pigment	blended shade 1 : 1	blended shade 1 : 2	blended shade 1 : 5
A	24 g	12 g : 12 g	8 g : 16 g	4 g : 20 g
B	10 g	5 g : 5 g	3,3 g : 6,7 g	1,7 g : 8,3 g
C	2,4 g	1,2 g : 1,2 g	0,8 g : 1,6 g	0,4 g : 2 g



How to mix pigments

Working with pigments is just as easy as working with tinting pastes.

Pigments simply need to be mixed with water to make a paste before adding to paints or plasters. We recommend to use soft water like purified water. This step-by-step guide will help you get started with tinting pigments.

We use pigments because:

- they can be used universally (all pigments are intermixable)
- they have an unlimited shelf life
- they do not contain any preservatives or other additives
- they are alkaline-resistant
- authentic earth pigments have a certain charm
-

The reason why we use pigments and not colour pastes is that preservatives or additives need to be used to preserve pastes, which conflicts with our company philosophy.

This example shows a 1:1 mixing ratio B of Lime Paint as a mixed tone using Spinel Green and Iron Oxide Black.

Powder products must first be mixed with the specified amount of water without any pigment.



1. Weigh the pigments



2. Add water – about half of the weight of the pigment (e.g. 500 ml of water to 1 kg of pigment)



3. Mix the pigments using a hand mixer or a wooden stirrer, until the pigment mixture is smooth and thick.



4. Using a wooden stirrer or similar, stir the pigments at the bottom of the container until they form a consistent paste. A wooden stirrer alone can also be used without using a hand mixer.

5. Add the pigment mixture to the paint.



6. Using the stirrer, stir the pigment mixture evenly into the paint.



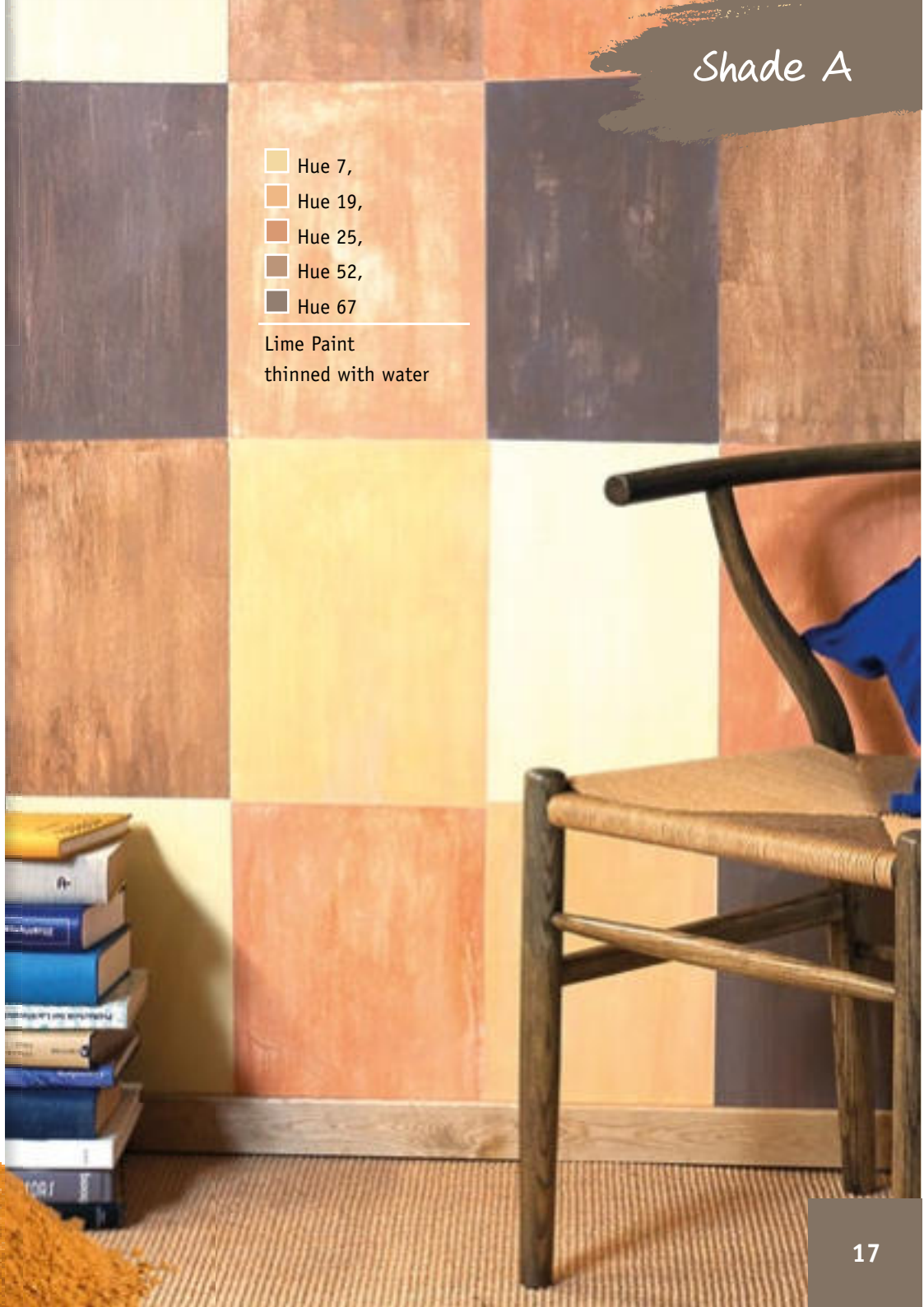
7. Apply the paint and leave to dry.



8. Pigments in Kreidezeit Wall Paints and Renders become considerably brighter during the drying process. This is an example of exactly the same paint, freshly applied on the left and fully dried on the right.



1	4	7	10	13	16	19	22
25	28	31	34	37	40	43	46
49	52	55	58	61	64	67	70
73	76	79	82	85	88	91	



Shade A

- Hue 7,
- Hue 19,
- Hue 25,
- Hue 52,
- Hue 67

Lime Paint
thinned with water

Ochre Yellow, Ochre Gold and Ochre Orange

Product containing ferrous rocks and minerals prone to natural weathering. The colouring substance is hydrated iron oxide. The country of origin is France, but yellow ochre is widely found elsewhere on Earth.

Ochre Red

Earth pigment, produced by burning yellow ochre. The colouring components are iron(III) oxide.

Siena Red

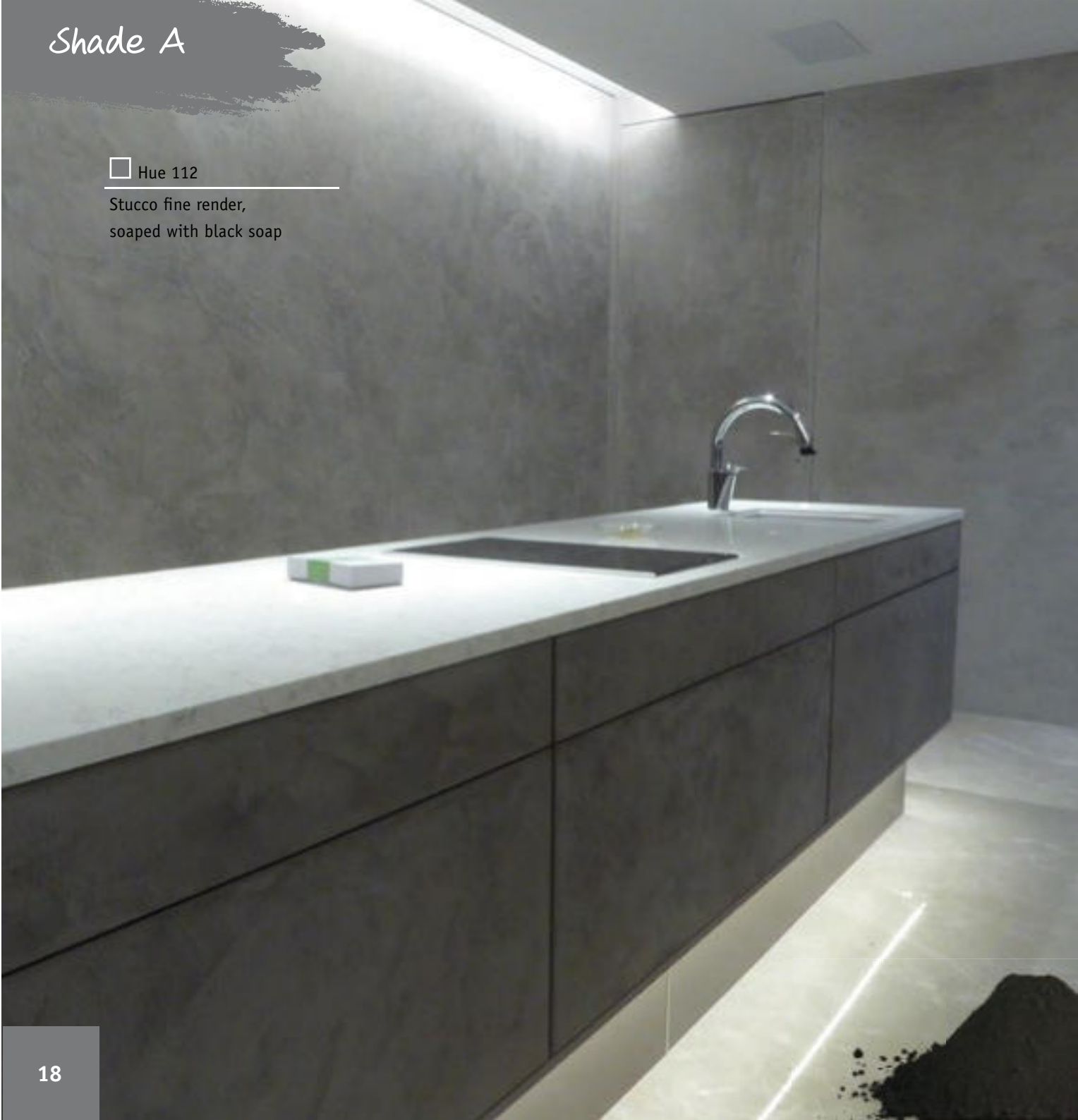
Earth pigment, produced by burning yellow sienna. Sienna contains a certain amount of silicates in contrast to the ochres.



Shade A

□ Hue 112

Stucco fine render,
soaped with black soap



Iron oxides (orange, black)

Pure synthetic rust, produced through precipitation reactions with aqueous ferrous sulphate solution. Very fine and extremely rich in colour.

The yellow and orange tones contain iron(III) oxide with different crystallisation water content.

Black is a magnetic mixed oxide containing iron(II) and iron(III) oxides; it is known as magnetite in its natural form.

94	97	100
103	106	109
112	115	118
121	124	127



Spinel pigments

Spinel is an oxide mineral that rarely occurs in nature. The chemical name for spinel is magnesium aluminate; in its pure form it is colourless. Due to different regional mixtures of iron, chromium, zinc, cobalt and manganese, spinel comes in a variety of colour variations. However, these are relatively pale and weak in colour.

Spinel pigments are known as mixed-phase pigments and are manufactured by technical means. Naturally ground spinels are mixed with metal salts (cobalt, antimony, nickel, chromium and titanium) and exposed to temperatures between 1200 and 1600°C in an oven, where ion exchange takes place and the material is enriched with the metals until saturated. This produces very vibrant colours. The metals are incorporated into the mineral structure so firmly that they are no longer bioavailable, i.e. they don't break down in the human body, during composting and when exposed to normal fires.

130 166

134 169

136 172

139 175

142 178

145 181

148 184


151 187

154 190

157 193

160 196

163 199

 Stucco, white

 Hue 196

Distemper

202

Reds

205

When choosing a colour, you might notice a lack of real red available. The reason is that so far no environmentally acceptable, non-fading and alkaline-resistant pigment has been found on Earth. The closest pigment to red we use is Iron Oxide Red or Siena Red, which is a burnt earth pigment whose colouration is also based on iron oxide.

208

211

214

Colourful earths and ores are amongst the oldest pigments used by humans. Prehistoric paintings in caves have survived tens of thousands of years as a testament to this. But not all natural pigments are non-toxic. The Ancient Egyptians used a poisonous arsenic orpiment as make-up, for example. Naturally you won't find these kinds of substances in our products. Our range contains only non-toxic pigments.

217

220

223

Additional pigments

226

In addition to the „Wall Paints and Plasters“ colour chart with 24 pigments and the Colour chart with 250 mixed tones, there are also 12 pigments on the colour chart „Additional pigments“. Extra care must be taken when turning these mineral pigments into a paste, but they have proven to work well in renders and fillers. The red iron oxides in particular often come out cloudy and streaky, especially when used with lime paints and plasters. They are a useful addition to the colour palette for experienced users.

229

232

235

238



Shade A

■ Hue 208

■ Iron Oxide red 140 + Ultramarine blue

■ Hue 208

■ Hue 238

Lime Wall Finish - smooth -,
washable cause of saponify and crimp

□ Hue 11

Lime Wall Finish - smooth -



Colour effect, aesthetics

The effect achieved by tinted KREIDEZEIT Wall Paints and Renders, which is based mainly on traditional recipes, is different from the widely used synthetic emulsion paints (we dispense with Titanium white). Surfaces are more vibrant and the colour can vary depending on the lighting conditions. There may be a slightly cloudy appearance, which is emphasised by using a brush. We therefore recommend using the brush to apply it. In some cases, it might be more practical to use a roller, such as when painting ingrain wallpaper. Tinted Lime Paint and highly pigmented (shade A) wall paints should never be applied with a roller.

Earth pigments are not intense tones with certain colour spectrum, rather they are gentle tones in which the entire spectrum is included. That means that these colours can be easily and harmoniously combined with each other.

2	5	8	11
14	17	20	23

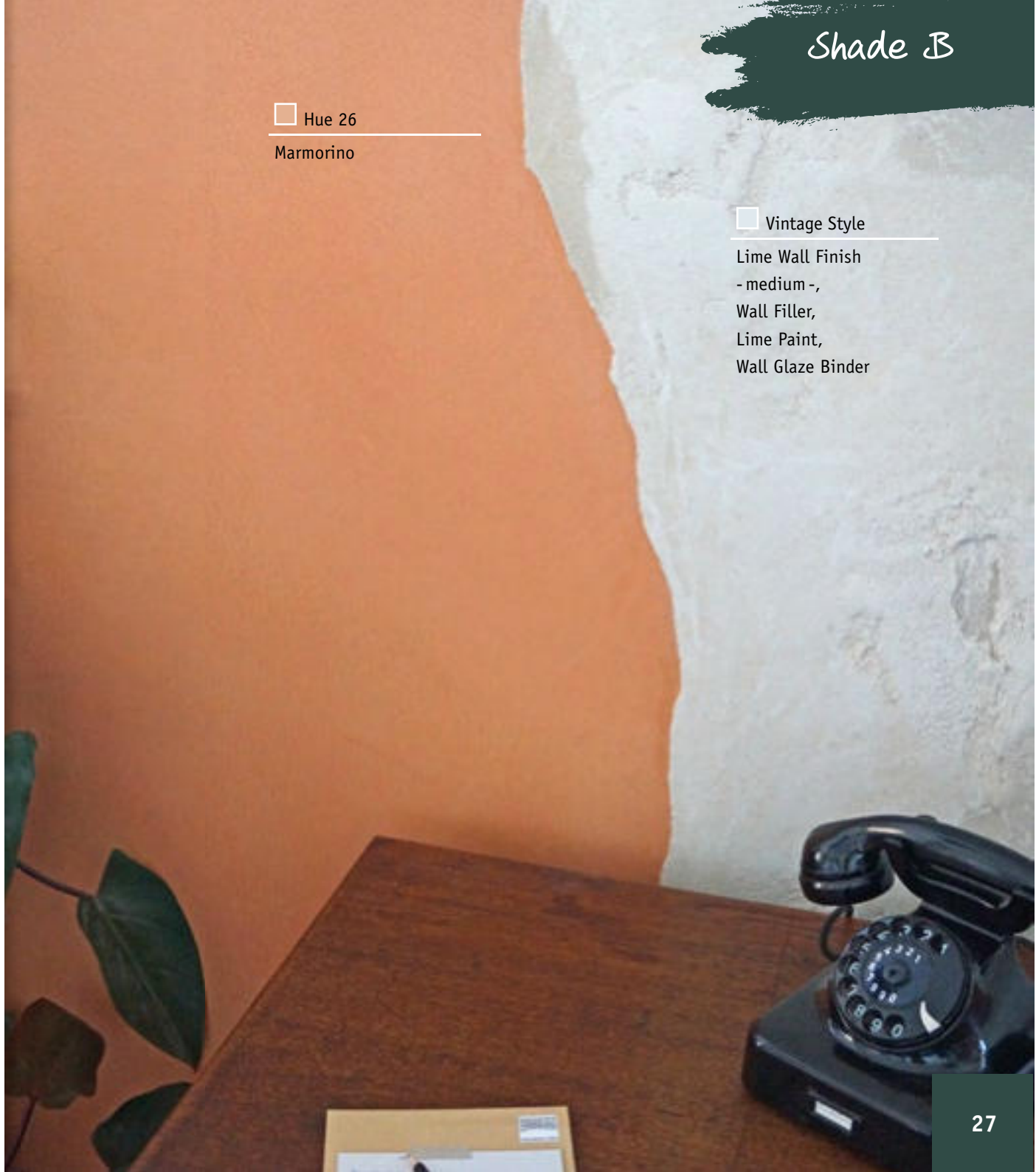
Hue 26

Marmorino

Vintage Style

Lime Wall Finish
- medium -,
Wall Filler,
Lime Paint,
Wall Glaze Binder

26	29	32	35
38	41	44	47
50	53	56	59
62	65	68	71
74	77	80	83
86	89	92	



Umbers

Natural earth pigments; the colouring components are hydrated iron with hydrated manganese oxide and alumina silicates. Due to the manganese content, umbers accelerate the drying process in oil-based paints.

Umbers occur in various tones, depending on the iron oxide, manganese oxide and silicate content.

95	98	101
104	107	110
113	116	

□ Hue 95

Lime Wall Finish - smooth -
with 1% Vermiculite



Shade B



□ Hue 119

GekkkoSOL Paint

Umbra Green, Dark

Mix of green mineral pigments (Spinel Green, Spinel Blue and Chromium Oxide Green) and marble dust.

119	122	125	128	131
134	137	140	143	146
149	152	155	158	161
164	167	170	173	176
179	182	185	188	191
194	197	200	203	206
209	212	215	218	221
224	227	230	232	235
238				

Oil paints/varnishes

Kreidezeit pigments can be used in oil paints, varnishes and waxes. When using the pigments in oily products, these are dispersed in oil or in a suitable solvent such as balsam turpentine.

3	6	9	12	15
18	21	24	27	30
33	36	39	42	45
48	51	54	57	60
63	66	69	72	75



■ Hue 196

Stand Oil Paint,
Vintage-effect with
Stand Oil Paint orange

■ Hue 18

Lime Paint

Ultramarine (Blue and Violet)

Artificial mineral pigments, produced by heating soda, clay and sulphur. Ultramarine tones are produced by exposure to different firing temperatures. Ultramarine Violet is a mix of Ultramarine Blue and Red. They are lime-resistant, but lime products with ultramarine tones added must be processed within 24 hours. They are non-fading and weather-resistant in themselves, but are not acid-proof. As our atmosphere today is slightly acidic, Ultramarine Blue is only suitable for limited outdoor applications (which can lead to blackening or even discolouration).

78	81	84	87
90	93	96	99
102	105	108	111
114	117	120	123



□ Hue 108
Clay Paint



Resistance, non-fading

Mineral pigments are highly light-fast compared to organic substances. This means the colour doesn't fade when exposed to sunlight.

Lime is an important ingredient that is frequently used in our wall paints and renders. Lime causes products to become highly alkaline. The pigments used in these products must be alkaline-resistant or lime-resistant. All KREIDEZEIT earth and mineral pigments are lime-resistant and unlimited storable.

126	129	132	135
138	141	144	147
150	153	156	159
162	165	168	171
174	177	180	183



■ grey blue

Stand Oil Paint

□ Hue 141

Lime Wall Finish
- medium -

Shade C

□ Hue 234

Lime Wall Finish - smooth - spackled,
Stencil with Lime Wall Finish, white






186	189	195
198	201	204
207	210	213
216	219	222
225	228	231
234	237	240

White tones

Even when colour pigments are used very sparingly, they still have an effect on the ambiance of your room.

Although the white shades on the colour fan are subtle, they provide enough contrast to pure white.

241	242	243	244
245	246	247	248
249	250		

-  Hue 243
-  Hue 245
-  Hue 248

Lime Paint , stencil Lime Paint, white

overview colour shades

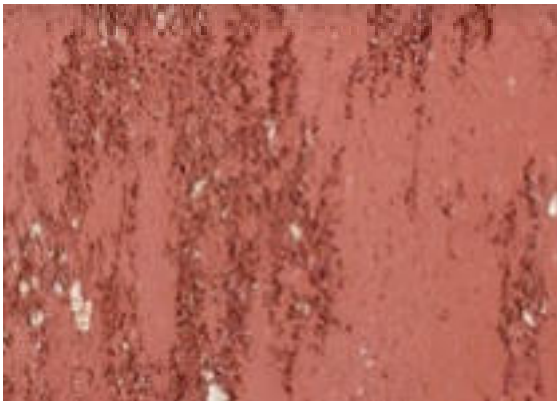
1. Spinel yellow, Shade A
2. Spinel yellow, Shade B
3. Spinel yellow, Shade C
4. Spinel yellow + Sun yellow, Blended shade 1:1, Shade A
5. Spinel yellow + Sun yellow, Blended shade 1:1, Shade B
6. Spinel yellow + Sun yellow, Blended shade 1:1, Shade C
7. Sun yellow, Shade A
8. Sun yellow, Shade B
9. Sun yellow, Shade C
10. Ochre gold, Shade A
11. Ochre gold, Shade B
12. Ochre gold, Shade C
13. Ochre yellow, Shade A
14. Ochre yellow, Shade B
15. Ochre yellow, Shade C
16. Ochre orange + Ochre yellow, Blended shade 1:1, Shade A
17. Ochre orange + Ochre yellow, Blended shade 1:1, Shade B
18. Ochre orange + Ochre yellow, Blended shade 1:1, Shade C
19. Spinel orange, Shade A
20. Spinel orange, Shade B
21. Spinel orange, Shade C
22. Ochre orange, Shade A
23. Ochre orange, Shade B
24. Ochre orange, Shade C
25. Orange oxide + Ochre orange, Blended shade 1:2, Shade A
26. Orange oxide + Ochre orange, Blended shade 1:2, Shade B
27. Orange oxide + Ochre orange, Blended shade 1:2, Shade C
28. Orange oxide, Shade A
29. Orange oxide, Shade B
30. Orange oxide, Shade C
31. Siena red, Shade A
32. Siena red, Shade B
33. Siena red, Shade C
34. Ochre red, Shade A
35. Ochre red, Shade B
36. Ochre red, Shade C
37. Ultramarine blue + Siena red, Blended shade 1:2, Shade A
38. Ultramarine blue + Siena red, Blended shade 1:2, Shade B
39. Ultramarine blue + Siena red, Blended shade 1:2, Shade C
40. Ultramarine blue + Siena red, Blended shade 1:1, Shade A
41. Ultramarine blue + Siena red, Blended shade 1:1, Shade B
42. Ultramarine blue + Siena red, Blended shade 1:1, Shade C
43. Iron oxide black + Siena red, Blended shade 1:2, Shade A
44. Iron oxide black + Siena red, Blended shade 1:2, Shade B
45. Iron oxide black + Siena red, Blended shade 1:2, Shade C
46. Umber black brown + Siena red, Blended shade 1:1, Shade A
47. Umber black brown + Siena red, Blended shade 1:1, Shade B
48. Umber black brown + Siena red, Blended shade 1:1, Shade C
49. Iron oxide black + Orange oxide, Blended shade 1:2, Shade A
50. Iron oxide black + Orange oxide, Blended shade 1:2, Shade B
51. Iron oxide black + Orange oxide, Blended shade 1:2, Shade C
52. Orange oxide + Umber dark, Blended shade 1:2, Shade A
53. Orange oxide + Umber dark, Blended shade 1:2, Shade B
54. Orange oxide + Umber dark, Blended shade 1:2, Shade C
55. Umber red-brown, Shade A
56. Umber red-brown, Shade B
57. Umber red-brown, Shade C
58. Umber reddish, Shade A
59. Umber reddish, Shade B



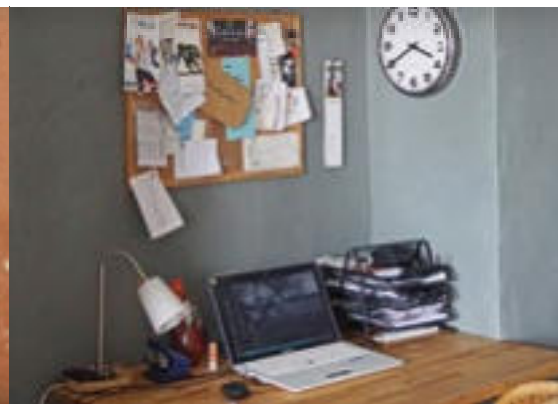
- | | | | |
|---|---|--|--|
| 60. Umber reddish, Shade C | 72. Umber black brown + Spinel orange, Blended shade 1:1, Shade C | 85. Umber natural, Shade A | 101. Ultramarine blue + Ochre yellow, Blended shade 1:2, Shade B |
| 61. Umber dark + Ochre red, Blended shade 1:1, Shade A | 73. Umber red-brown + Ochre yellow, Blended shade 1:2, Shade A | 86. Umber natural, Shade B | 102. Ultramarine blue + Ochre yellow, Blended shade 1:2, Shade C |
| 62. Umber dark + Ochre red, Blended shade 1:1, Shade B | 74. Umber red-brown + Ochre yellow, Blended shade 1:2, Shade B | 87. Umber natural, Shade C | 103. Ultramarine blue + Ochre orange, Blended shade 1:1, Shade A |
| 63. Umber dark + Ochre red, Blended shade 1:1, Shade C | 75. Umber red-brown + Ochre yellow, Blended shade 1:2, Shade C | 88. Umber green, Shade A | 104. Ultramarine blue + Ochre orange, Blended shade 1:1, Shade B |
| 64. Siena red + Iron oxide black, Blended shade 1:2, Shade A | 76. Umber light brown + Ochre yellow, Blended shade 1:1, Shade A | 89. Umber green, Shade B | 105. Ultramarine blue + Ochre orange, Blended shade 1:1, Shade C |
| 65. Siena red + Iron oxide black, Blended shade 1:2, Shade B | 77. Umber light brown + Ochre yellow, Blended shade 1:1, Shade B | 90. Umber green, Shade C | 106. Ultramarine blue + Umber dark, Blended shade 1:2, Shade A |
| 66. Siena red + Iron oxide black, Blended shade 1:2, Shade C | 78. Umber light brown + Ochre yellow, Blended shade 1:1, Shade C | 91. Umber dark + Ochre orange, Blended shade 1:1, Shade A | 107. Ultramarine blue + Umber dark, Blended shade 1:2, Shade B |
| 67. Umber black brown, Shade A | 79. Umber light brown, Shade A | 92. Umber dark + Ochre orange, Blended shade 1:1, Shade B | 108. Ultramarine blue + Umber dark, Blended shade 1:2, Shade C |
| 68. Umber black brown, Shade B | 80. Umber light brown, Shade B | 93. Umber dark + Ochre orange, Blended shade 1:1, Shade C | 109. Ultramarine blue + Iron oxide black, Blended shade 1:1, Shade A |
| 69. Umber black brown, Shade C | 81. Umber light brown, Shade C | 94. Umber dark, Shade A | 110. Ultramarine blue + Iron oxide black, Blended shade 1:1, Shade B |
| 70. Umber black brown + Spinel orange, Blended shade 1:1, Shade A | 82. Ochre yellow + Umber green, Blended shade 1:1, Shade A | 95. Umber dark, Shade B | |
| 71. Umber black brown + Spinel orange, Blended shade 1:1, Shade B | 83. Ochre yellow + Umber green, Blended shade 1:1, Shade B | 96. Umber dark, Shade C | |
| | 84. Ochre yellow + Umber green, Blended shade 1:1, Shade C | 97. Iron oxide black + Spinel yellow, Blended shade 1:2, Shade A | |
| | | 98. Iron oxide black + Spinel yellow, Blended shade 1:2, Shade B | |
| | | 99. Iron oxide black + Spinel yellow, Blended shade 1:2, Shade C | |
| | | 100. Ultramarine blue + Ochre yellow, Blended shade 1:2, Shade A | |



- 111. Ultramarine blue + Iron oxide black, Blended shade 1:1, Shade C
- 112. Iron oxide black, Shade A
- 113. Iron oxide black, Shade B
- 114. Iron oxide black, Shade C
- 115. Ochre red + Iron oxide black, Blended shade 1:1, Shade A
- 116. Ochre red + Iron oxide black, Blended shade 1:1, Shade B
- 117. Ochre red + Iron oxide black, Blended shade 1:1, Shade C
- 118. Umber green dark + Iron oxide black, Blended shade 1:1, Shade A
- 119. Umber green dark + Iron oxide black, Blended shade 1:1, Shade B
- 120. Umber green dark + Iron oxide black, Blended shade 1:1, Shade C
- 121. Iron oxide black + Umber green, Blended shade 1:2, Shade A
- 122. Iron oxide black + Umber green, Blended shade 1:2, Shade B
- 123. Iron oxide black + Umber green, Blended shade 1:2, Shade C
- 124. Iron oxide black + Ochre orange, Blended shade 1:2, Shade A
- 125. Iron oxide black + Ochre orange, Blended shade 1:2, Shade B
- 126. Iron oxide black + Ochre orange, Blended shade 1:2, Shade C
- 127. Spinel green + Iron oxide black, Blended shade 1:2, Shade A
- 128. Spinel green + Iron oxide black, Blended shade 1:2, Shade B
- 129. Spinel green + Iron oxide black, Blended shade 1:2, Shade C
- 130. Spinel green + Iron oxide black, Blended shade 1:1, Shade A
- 131. Spinel green + Iron oxide black, Blended shade 1:1, Shade B
- 132. Spinel green + Iron oxide black, Blended shade 1:1, Shade C
- 133. Umber green dark + Umber dark, Blended shade 1:1, Shade A
- 134. Umber green dark + Umber dark, Blended shade 1:1, Shade B
- 135. Umber green dark + Umber dark, Blended shade 1:1, Shade C
- 136. Spinel green + Umber reddish, Blended shade 1:1, Shade A
- 137. Spinel green + Umber reddish, Blended shade 1:1, Shade B
- 138. Spinel green + Umber reddish, Blended shade 1:1, Shade C
- 139. Umber green dark + Ochre orange, Blended shade 1:1, Shade A
- 140. Umber green dark + Ochre orange, Blended shade 1:1, Shade B
- 141. Umber green dark + Ochre orange, Blended shade 1:1, Shade C
- 142. Spinel mint + Spinel orange, Blended shade 1:5, Shade A
- 143. Spinel mint + Spinel orange, Blended shade 1:5, Shade B
- 144. Spinel mint + Spinel orange, Blended shade 1:5, Shade C
- 145. Umber green dark + Spinel yellow, Blended shade 1:5, Shade A
- 146. Umber green dark + Spinel yellow, Blended shade 1:5, Shade B
- 147. Umber green dark + Spinel yellow, Blended shade 1:5, Shade C
- 148. Spinel green + Sun yellow, Blended shade 1:5, Shade A
- 149. Spinel green + Sun yellow, Blended shade 1:5, Shade B
- 150. Spinel green + Sun yellow, Blended shade 1:5, Shade C
- 151. Spinel green + Spinel orange, Blended shade 1:1, Shade A
- 152. Spinel green + Spinel orange, Blended shade 1:1, Shade B
- 153. Spinel green + Spinel orange, Blended shade 1:1, Shade C
- 154. Umber green dark, Shade A
- 155. Umber green dark, Shade B
- 156. Umber green dark, Shade C
- 157. Spinel mint + Spinel yellow, Blended shade 1:5, Shade A
- 158. Spinel mint + Spinel yellow, Blended shade 1:5, Shade B



- 159. Spinel mint + Spinel yellow, Blended shade 1:5, Shade C
- 160. Spinel mint + Spinel yellow, Blended shade 1:2, Shade A
- 161. Spinel mint + Spinel yellow, Blended shade 1:2, Shade B
- 162. Spinel mint + Spinel yellow, Blended shade 1:2, Shade C
- 163. Spinel mint + Spinel yellow, Blended shade 1:1, Shade A
- 164. Spinel mint + Spinel yellow, Blended shade 1:1, Shade B
- 165. Spinel mint + Spinel yellow, Blended shade 1:1, Shade C
- 166. Sun yellow + Spinel green, Blended shade 1:2, Shade A
- 167. Sun yellow + Spinel green, Blended shade 1:2, Shade B
- 168. Sun yellow + Spinel green, Blended shade 1:2, Shade C
- 169. Spinel green, Shade A
- 170. Spinel green, Shade B
- 171. Spinel green, Shade C
- 172. Spinel mint + Spinel green, Blended shade 1:1, Shade A
- 173. Spinel mint + Spinel green, Blended shade 1:1, Shade B
- 174. Spinel mint + Spinel green, Blended shade 1:1, Shade C
- 175. Spinel green + Ultramarine violet, Blended shade 1:1, Shade A
- 176. Spinel green + Ultramarine violet, Blended shade 1:1, Shade B
- 177. Spinel green + Ultramarine violet, Blended shade 1:1, Shade C
- 178. Ultramarine blue + Spinel green, Blended shade 1:2, Shade A
- 179. Ultramarine blue + Spinel green, Blended shade 1:2, Shade B
- 180. Ultramarine blue + Spinel green, Blended shade 1:2, Shade C
- 181. Iron oxide black + Spinel turquoise, Blended shade 1:2, Shade A
- 182. Iron oxide black + Spinel turquoise, Blended shade 1:2, Shade B
- 183. Iron oxide black + Spinel turquoise, Blended shade 1:2, Shade C
- 184. Iron oxide black + Spinel turquoise, Blended shade 1:1, Shade A
- 185. Iron oxide black + Spinel turquoise, Blended shade 1:1, Shade B
- 186. Iron oxide black + Spinel turquoise, Blended shade 1:1, Shade C
- 187. Iron oxide black + Spinel turquoise, Blended shade 1:5, Shade A
- 188. Iron oxide black + Spinel turquoise, Blended shade 1:5, Shade B
- 189. Iron oxide black + Spinel turquoise, Blended shade 1:5, Shade C
- 190. Spinel turquoise, Shade A
- 191. Spinel turquoise, Shade B
- 192. Spinel turquoise, Shade C
- 193. Spinel mint, Shade A
- 194. Spinel mint, Shade B
- 195. Spinel mint, Shade C
- 196. Spinel blue + Spinel turquoise, Blended shade 1:1, Shade A



197. Spinel blue + Spinel turquoise,
Blended shade 1:1, Shade B
198. Spinel blue + Spinel turquoise,
Blended shade 1:1, Shade C
199. Spinel blue, Shade A
200. Spinel blue, Shade B
201. Spinel blue, Shade C
202. Iron oxide black + Spinel blue,
Blended shade 1:5, Shade A
203. Iron oxide black + Spinel blue,
Blended shade 1:5, Shade B
204. Iron oxide black + Spinel blue,
Blended shade 1:5, Shade C
205. Iron oxide black + Spinel blue,
Blended shade 1:1, Shade A
206. Iron oxide black + Spinel blue,
Blended shade 1:1 B
207. Iron oxide black + Spinel blue,
Blended shade 1:1, Shade C
208. Spinel orange + Spinel blue,
Blended shade 1:2, Shade A
209. Spinel orange + Spinel blue,
Blended shade 1:2, Shade B
210. Spinel orange + Spinel blue,
Blended shade 1:2, Shade C
211. Spinel blue + Ochre orange,
Blended shade 1:1, Shade A
212. Spinel blue + Ochre orange,
Blended shade 1:1, Shade B
213. Spinel blue + Ochre orange,
Blended shade 1:1, Shade C
214. Ultramarine blue + Spinel yellow,
Blended shade 1:1, Shade A
215. Ultramarine blue + Spinel yellow,
Blended shade 1:1, Shade B
216. Ultramarine blue + Spinel yellow,
Blended shade 1:1, Shade C
217. Ochre gold + Ultramarine blue,
Blended shade 1:2 A
218. Ochre gold + Ultramarine blue,
Blended shade 1:2 B
219. Ochre gold + Ultramarine blue,
Blended shade 1:2, Shade C
220. Iron oxide black + Ultramarine
blue, Blended shade 1:5, Shade A
221. Iron oxide black + Ultramarine
blue, Blended shade 1:5, Shade B
222. Iron oxide black + Ultramarine
blue, Blended shade 1:5, Shade C
223. Ultramarine blue, Shade A
224. Ultramarine blue, Shade B
225. Ultramarine blue, Shade C
226. Ultramarine blue + Ultramarine
violet, Blended shade 1:1, Shade A
227. Ultramarine blue + Ultramarine
violet, Blended shade 1:1, Shade B
228. Ultramarine blue + Ultramarine
violet, Blended shade 1:1, Shade C
229. Ultramarine violet, Shade A
230. Ultramarine violet, Shade B
231. Ultramarine violet, Shade C
232. Ochre red + Ultramarine violet,
Blended shade 1:5, Shade A
233. Ochre red + Ultramarine violet,
Blended shade 1:5, Shade B
234. Ochre red + Ultramarine violet,
Blended shade 1:5, Shade C
235. Ultramarine blue + Ochre red,
Blended shade 1:2, Shade A
236. Ultramarine blue + Ochre red,
Blended shade 1:2, Shade B
237. Ultramarine blue + Ochre red,
Blended shade 1:2, Shade C
238. Ultramarine blue + Ochre red,
Blended shade 1:1, Shade A
239. Ultramarine blue + Ochre red,
Blended shade 1:1, Shade B
240. Ultramarine blue + Ochre red,
Blended shade 1:1, Shade C
241. Sun yellow, Shade D
242. Spinel orange, Shade D
243. Umber natural, Shade D
244. Umber reddish, Shade D
245. Umber black-brown, Shade D
246. Umber green dark, Shade D
247. Spinel blue, Shade D
248. Iron oxide black, Shade D
249. Umber dark, Shade D
250. Ultramarine blue, Shade D

